

COLLABORATIVE. INCLUSIVE. TRANSFORMATIVE. GLOBAL.



WRN

Women Research Network
Research for Human Flourishing



INSTITUTIONAL CHARTER

OUR PURPOSE | OUR SYSTEM | OUR IMPACT

*A Living Framework for Collaborative Research,
Sustainable Transformation and Human Flourishing*



HUMAN
DIGNITY



EQUITY &
JUSTICE



INTEGRITY &
ETHICS



COLLABORATION
& SOLIDARITY



SUSTAINABILITY
& STEWARDSHIP

Advancing knowledge. Strengthening capabilities. Transforming lives.

A Letter to Future Researchers

There are moments in history when institutions are created not simply to fill a gap, but to change the way the world thinks.

The Women Research Network (WRN) was founded on one simple conviction: that research should improve lives.

This conviction emerged from a growing recognition that many of the challenges facing women and girls across the world cannot be understood, or solved, through isolated disciplines, fragmented institutions, or disconnected policies. Health cannot be separated from education. Entrepreneurship cannot be separated from wellbeing. Climate resilience cannot be separated from justice. Technology cannot be separated from ethics. Human lives are interconnected, and the research that seeks to improve them must be equally interconnected.

From its earliest days, WRN sought to create spaces where researchers could collaborate across disciplines, countries, cultures, and sectors. What began as a network has evolved into something much greater: a global research organisation committed to advancing knowledge that improves the health, wellbeing, opportunities, and sustainable futures of women and girls, particularly across the Global South.

This document represents more than a strategic vision. It is a declaration of purpose. It reflects our belief that research should not be measured solely by the number of publications produced or grants secured, but by its contribution to healthier communities, stronger institutions, more equitable societies, and the flourishing of present and future generations.

At the heart of this vision lies a fundamental question:

How can research create the conditions in which women and girls flourish?

Every project undertaken by WRN, every partnership we establish, every researcher we support, and every piece of knowledge we generate seeks to answer this question.

Our aspiration is ambitious. We seek not only to produce excellent research but to reshape the relationship between research and society. We believe that knowledge should be co-created with communities, translated into meaningful action, and applied to address some of the most pressing challenges of our time. We believe that the Global South is not simply a location where research is conducted, but a source of ideas, innovation, leadership, and solutions that can enrich global understanding.

As you read this document, whether you are a researcher, policymaker, practitioner, student, funder, entrepreneur, or community leader, I invite you to see yourself not as an observer but as a partner in this shared endeavour. The future we seek cannot be built by one organisation alone. It requires collaboration across disciplines, institutions, countries, and communities.

This is our invitation:


- ✓ To reimagine research.
- ✓ To strengthen leadership.
- ✓ To transform knowledge into action.
- ✓ To advance health, wellbeing, justice, and sustainable futures.

Above all, to ensure that research contributes to a world in which every woman and girl has the opportunity to flourish.

The journey towards 2035 begins here.

Dr Bridget Irene

Founder, Women Research Network (WRN)



Dr Bridget Irene

Founder,

Women Research Network (WRN)

Website: womenresearchnetwork.org/

[LinkedIn](#) | [Twitter](#) | [Facebook](#) | [Instagram](#)

FIGURE F1

THE WRN JOURNEY

From Connection to Global Impact



One Purpose. Many Pathways. Lasting Impact.
Research for Human Flourishing.



Women Research Network

Research for Human Flourishing

TYPE: INSTITUTIONAL FRAMEWORK

The WRN Declaration

Research for Human Flourishing

The Women Research Network (WRN) exists because we believe that research has a higher purpose.

Research is not simply the pursuit of knowledge. It is the pursuit of

- ❖ Healthier lives.
- ❖ More equitable societies.
- ❖ Stronger communities.
- ❖ Sustainable futures.

Research should

- ❖ Expand opportunity.
- ❖ Strengthen dignity.
- ❖ Advance justice.
- ❖ Inspire innovation.
- ❖ Create hope.

Above all, research should enable human flourishing.

We believe that the most significant challenges facing humanity cannot be understood through isolated disciplines or solved by individual institutions alone. They demand collaboration across knowledge systems, cultures, professions, communities, sectors and nations.

We believe that women are not merely participants in research, they are

- ❖ Creators of knowledge.
- ❖ Leaders of innovation.
- ❖ Agents of transformation.
- ❖ Partners in shaping the future.

We believe that the Global South is not simply a place where research happens. It is:

- ❖ A source of ideas.
- ❖ A source of innovation.
- ❖ A source of leadership.
- ❖ A source of knowledge capable of transforming global understanding.

We believe that communities are not subjects of research; they are partners in discovery. Their lived experiences, aspirations and wisdom are essential to creating knowledge that is relevant, ethical and transformative.

We believe that excellence and inclusion strengthen one another.

Research is most powerful when diverse voices, disciplines and ways of knowing are brought together in pursuit of shared understanding and collective action.

We believe that knowledge carries responsibility.

Research should not end with publication. It should

- ❖ Inform policy.
- ❖ Improve practice.
- ❖ Strengthen institutions.
- ❖ Support communities.
- ❖ Shape leadership.
- ❖ Create opportunity.
- ❖ Protect the planet.
- ❖ Improve lives.

Our measure of success is therefore not simply what we discover, but what changes because of what we discover.

We envision a future in which women and girls everywhere have the opportunity to live healthy, meaningful and fulfilling lives; where research informs wiser decisions, strengthens resilient institutions and contributes to societies founded on dignity, justice and sustainability.

This is the future that inspires our work.

This is the responsibility that guides our research.

This is the commitment we make to our partners, our communities and future generations.

This is the Women Research Network.

Research for Human Flourishing.

Table of Contents

A Letter to Future Researchers.....	1
The WRN Declaration.....	5
PART ONE	11
The Foundations of a New Research Movement	11
CHAPTER ONE	12
Why the World Needs a New Research Movement	12
Opening Reflection	12
1.1 Beyond the Production of Knowledge	12
1.2 Human Problems Are Not Disciplinary Problems	13
1.3 A New Philosophy of Research	13
1.4 Why Women Matter	14
1.5 The Emergence of WRN	14
1.6 The Beginning of a New Research Movement	15
Key Messages	16
Looking Ahead	16
CHAPTER 2	17
The WRN Manifesto	17
Opening Reflection	17
2.1 Why a Manifesto?	17
2.2 Our Twelve Beliefs	18
2.3 The Responsibility We Accept	20
Chapter Summary	21
CHAPTER 3	22
The WRN Philosophy of Research for Human Flourishing	22
Opening Reflection	22
3.1 Why Research Needs a New Paradigm	22
3.2 Theoretical Foundations	23

3.3 The WRN Proposition	24
3.4 The Five Commitments of the WRN Philosophy	25
3.5 The WRN Research System	25
3.6 Implications for the Future of Research	26
Chapter Summary	27
PART TWO	28
The WRN Research System	28
CHAPTER 4	29
The WRN Flourishing Ecosystem Model (FEM)	29
Opening Reflection	29
4.1 Why an Ecosystem Model?	29
4.2 The Central Proposition	30
4.3 The Five Layers of the Ecosystem	30
4.4 Knowledge as the Connecting Thread	32
4.5 Dynamic Relationships	33
4.6 Implications for Research	33
4.7 Implications for Policy	33
Chapter Summary	34
CHAPTER 5	35
The WRN Flourishing Lens	35
Opening Reflection	35
5.1 Why a Flourishing Lens?	35
5.2 The Central Question	36
5.3 The Six Dimensions of the Flourishing Lens	37
5.4 Applying the Flourishing Lens	38
5.5 The Flourishing Lens and Research Design	39
5.7 Implications for Research Excellence	40
Chapter Summary	41
CHAPTER 6	42

The WRN Change Pathway	42
Opening Reflection	42
6.1 Why a Change Pathway?	42
6.2 The WRN Proposition	43
6.3 The Eight Stages of the WRN Change Pathway	43
6.4 The Feedback Loops	46
6.5 Measuring Change	46
6.6 Relationship to the WRN Research System	47
Chapter Summary	48
CHAPTER 7	49
The WRN Research Cycle	49
Opening Reflection	49
7.1 Why a Research Cycle?	49
7.2 The WRN Proposition	49
7.3 The Seven Stages of the Research Cycle	50
7.5 Relationship to the WRN Research System	53
7.6 Implications for Research Excellence	53
Chapter Summary	54
PART THREE	55
Building the WRN Institute: From Philosophy to Institution	55
CHAPTER 8	56
Vision, Mission and Values	56
Opening Reflection	56
8.1 Our Purpose	56
8.2 Our Vision	57
8.3 Our Mission	57
8.4 Our North Star	57
8.5 Our Institutional Promise	58
8.6 Our Values	58

Chapter Summary	59
CHAPTER 9	61
The WRN Institutional Architecture	61
9.1 From Philosophy to Institution	61
9.2 The WRN Institutional Model	62
9.3 Alignment Across the Institution	65
9.4 Building for the Future	65
Chapter Summary	68
CHAPTER 10	69
The WRN Global Initiatives	69
Opening Reflection	69
10.1 Why Global Initiatives?	69
10.2 Every Initiative Has the Same Architecture	73
Chapter Summary	74
CHAPTER 11	76
The WRN Institutional Platforms	76
Opening Reflection	76
Why Institutional Platforms?	76
Platform One: Research Leadership Platform	76
Platform Two: Research Excellence Platform	77
Platform Three: Knowledge Translation Platform	77
Platform Four: Researcher Development Platform	78
Platform Five: Global Partnerships Platform	78
Platform Six: Innovation and Impact Platform	78
CHAPTER 12	80
The WRN Global Communities	80
Opening Reflection	80
The WRN Communities	81

PART ONE

The Foundations of a New Research Movement

CHAPTER ONE

Why the World Needs a New Research Movement

"The future will not be transformed by knowledge alone. It will be transformed by knowledge that improves lives."

Opening Reflection

We live in an age of extraordinary scientific achievement.

Artificial intelligence is transforming economies and reshaping how we live and work. Advances in biomedical science continue to extend life expectancy and improve healthcare. Digital technologies have revolutionised communication, education, commerce, and access to information. Global collaboration has accelerated scientific discovery at an unprecedented pace, producing knowledge that previous generations could scarcely imagine.

Yet despite these remarkable achievements, profound inequalities continue to define the lives of millions of women and girls across the world.

Too many continue to experience preventable illness, educational exclusion, economic insecurity, gender-based violence, environmental vulnerability, digital marginalisation, and limited opportunities to participate in shaping the knowledge that influences their futures.

This paradox presents one of the defining questions of the twenty-first century.

How can humanity possess more knowledge than ever before while so many people remain unable to realise their full potential?

For WRN, this is not simply a question about research productivity. It is a question about the purpose of research itself.

1.1 Beyond the Production of Knowledge

For centuries, universities and research institutions have expanded the boundaries of human knowledge. Scientific inquiry has transformed medicine, engineering, agriculture, business, education, environmental management, and countless other fields. These achievements deserve recognition and celebration.

However, the challenges confronting contemporary society are increasingly characterised not by a lack of knowledge but by the complexity of translating knowledge into meaningful societal change.

Research has become exceptionally successful at generating evidence.

It has been less successful at ensuring that evidence consistently improves the lives of those who need it most.

The challenge facing the twenty-first century is therefore not only to produce more research.

It is to produce research that matters:

- Research that informs policy.
- Research that strengthens institutions.
- Research that empowers communities.
- Research that improves health and wellbeing.
- Research that creates opportunities for future generations.
- Research that enables human flourishing.

1.2 Human Problems Are Not Disciplinary Problems

Universities organise knowledge into disciplines., but **people** do not live their lives that way.

For example, a young woman experiencing educational disadvantage may simultaneously encounter poor health, financial insecurity, digital exclusion, climate vulnerability, caring responsibilities, and limited employment opportunities.

These are not separate challenges. They are interconnected dimensions of a single lived experience. Yet research frequently approaches these issues independently:

- Health researchers investigate health.
- Economists study markets.
- Educational researchers examine learning.
- Environmental scientists analyse climate.
- Business scholars explore entrepreneurship.

Each discipline contributes valuable insights. However, no single discipline can fully explain the complexity of human lives.

The problems that define the twenty-first century are not disciplinary problems. They are human problems. Human problems require integrated research capable of connecting knowledge across disciplines, sectors, cultures, institutions, and communities.

This conviction lies at the heart of WRN.

1.3 A New Philosophy of Research

WRN believes that the purpose of research extends beyond the discovery of knowledge.

Research should contribute to healthier societies:

- More equitable opportunities.

- Stronger institutions.
- Resilient communities.
- Sustainable environments.
- Meaningful lives.

This requires a different philosophy. Rather than asking, *"What knowledge can we produce?"*

WRN begins by asking, *"What conditions enable women and girls to flourish?"*

This shift is profound. **Knowledge** becomes the means and **Human flourishing** becomes the purpose.

Research is therefore evaluated not only by academic excellence, but also by its contribution to improving lives.

1.4 Why Women Matter

Women are central to the wellbeing of families, communities, economies, and societies.

Their contributions extend across education, entrepreneurship, healthcare, governance, environmental stewardship, scientific discovery, cultural leadership, and social innovation.

Yet women continue to face structural barriers that limit access to opportunities, resources, leadership, and participation in knowledge production.

These barriers are particularly evident across many parts of the Global South, where intersecting inequalities shape health, education, employment, climate resilience, technological access, and public participation.

WRN does not approach women as passive beneficiaries of research. Women are researchers, they are also:

- Leaders.
- Innovators.
- Entrepreneurs.
- Educators.
- Community builders.
- Policy actors.
- Creators of knowledge.

Strengthening opportunities for women to generate, translate, and apply knowledge strengthens society as a whole.

1.5 The Emergence of WRN

The Women Research Network was established in response to a simple but ambitious idea.

Research can become a more powerful force for societal transformation when it is collaborative, interdisciplinary, inclusive, globally connected, and grounded in the realities of people's lives.

What began as a network connecting researchers has evolved into an independent research and innovation organisation committed to advancing knowledge that improves health, wellbeing, opportunity, and sustainable futures.

WRN seeks not merely to support researchers.

It seeks to reshape the relationship between research and society.

This requires new partnerships.

- New methodologies.
- New forms of leadership.
- New ways of measuring success.

Above all, it requires a renewed commitment to ensuring that research serves humanity.

1.6 The Beginning of a New Research Movement

This document is both a strategy and an invitation.

It invites researchers, policymakers, practitioners, governments, communities, philanthropists, entrepreneurs, industry, and international organisations to participate in a shared movement:

- A movement that believes knowledge carries responsibility.
- A movement that recognises women as creators of knowledge and agents of transformation.
- A movement committed to interdisciplinary collaboration, ethical partnership, and societal impact.
- A movement organised around one guiding question:

How can research create the conditions in which women and girls flourish?

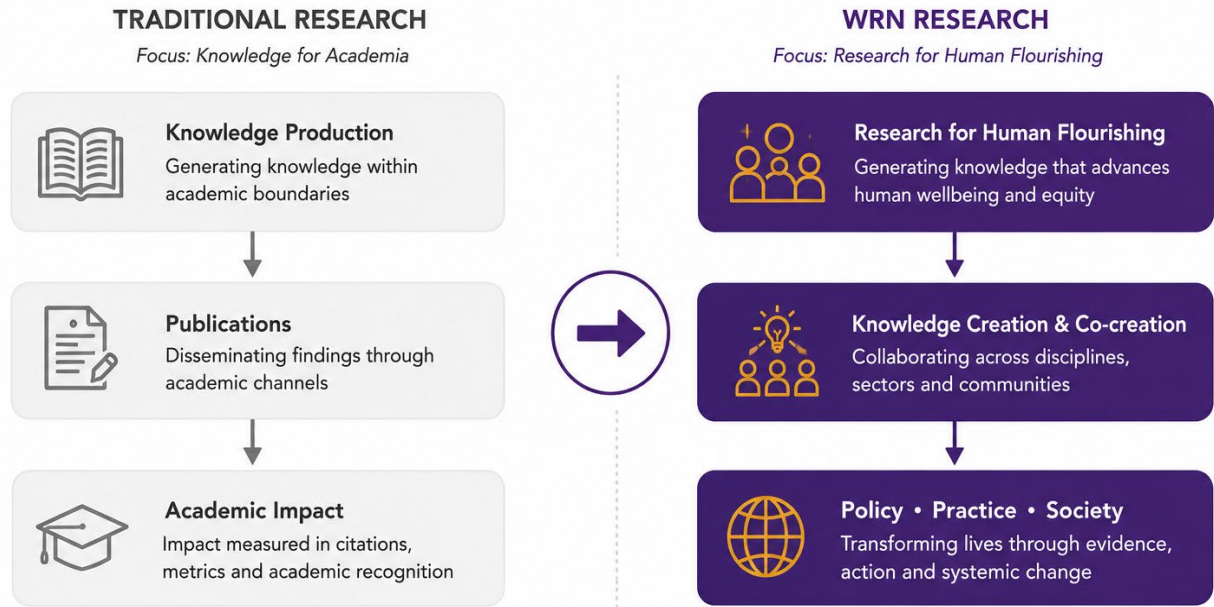
The chapters that follow present WRN's answer to that question.

Together they outline not only the future of one organisation, but a vision for the future of research itself.

FIGURE 1.1

The Changing Purpose of Research

From knowledge production to human flourishing



Women Research Network

Research for Human Flourishing

TYPE: PHILOSOPHY

Key Messages

- Research should be judged by the lives it improves as well as the knowledge it generates.
- Human challenges require interdisciplinary and collaborative solutions.
- Women are central to creating knowledge and shaping sustainable futures.
- Human flourishing is the organising purpose of WRN.
- The future of research lies in partnership, inclusion, and societal impact.

Looking Ahead

Chapter Two introduces the WRN Manifesto - the twelve beliefs that define our identity, shape our decisions, and guide our commitment to research for human flourishing.

CHAPTER 2

The WRN Manifesto

A New Covenant Between Research and Society

"Research carries not only the responsibility to discover, but also the responsibility to serve."

Opening Reflection

Every generation inherits questions that define its future. Some generations ask how to build stronger economies. Others ask how to end disease and others ask how to protect the planet.

The defining question of our generation is different.

How can research create a future in which people are able to flourish?

This question cannot be answered by one discipline, one institution, one country, or one methodology. It requires a different way of thinking about research itself. The WRN Manifesto represents our response to that challenge.

It is not simply a statement of organisational values. It is a declaration of how research should serve humanity.

2.1 Why a Manifesto?

Manifestos have historically emerged during periods of profound social and intellectual transformation:

- They articulate new ways of understanding the world.
- They challenge existing assumptions.
- They invite collective action.

WRN believes that contemporary research has reached such a moment. Scientific knowledge continues to expand at unprecedented speed, yet the relationship between research and society remains uneven.

Communities frequently remain excluded from shaping research agendas. Knowledge often fails to reach policy and practice.

Success is still predominantly measured through publications, citations, rankings and grant income rather than improvements in people's lives. These indicators remain important.

However, they are insufficient. Research should also be evaluated according to its contribution to healthier societies, stronger institutions, greater equity and human flourishing.

The WRN Manifesto therefore represents an invitation to rethink the purpose of research.

2.2 Our Twelve Beliefs

The twelve beliefs that follow constitute the philosophical foundation of WRN. They guide:

- Every decision we make.
- Every partnership we establish.
- Every project we undertake.
- Every researcher we support.
- Every piece of knowledge we create.

They are not organisational slogans. They are enduring principles intended to shape WRN for generations.

1. Research Exists to Improve Lives

Knowledge has intrinsic value. Its highest purpose, however, is realised when it contributes to healthier lives, stronger communities, more equitable societies and sustainable futures.

Research excellence and societal impact are inseparable.

2. Every Woman and Girl Has the Right to Flourish

Flourishing extends beyond survival or resilience. It encompasses health, dignity, opportunity, leadership, meaningful work, safety, belonging, education, environmental security and the freedom to realise one's potential.

Research should create conditions in which flourishing becomes possible.

3. Women Are Creators of Knowledge

Women are not passive recipients of research.

- They are
- Researchers.
- Innovators.
- Entrepreneurs.
- Professionals.
- Community leaders.
- Educators.
- Policy actors.

Their knowledge strengthens society.

Research should recognise and amplify their contributions.

4. Human Problems Require Interdisciplinary Solutions

- Health.
- Education.
- Climate.
- Technology.
- Entrepreneurship.
- Governance.
- Justice.

These challenges are interconnected. Research should be equally interconnected.

5. The Global South Shapes Global Knowledge

Knowledge should never flow in one direction. The Global South contributes ideas, innovations, leadership and theories that enrich global understanding. WRN is committed to strengthening this contribution.

6. Communities Are Partners in Research

Communities possess knowledge. Research should create opportunities for shared learning rather than extract information. Knowledge is co-created.

7. Diversity Strengthens Discovery

- Different disciplines.
- Different cultures.
- Different perspectives.
- Different methodologies.

Together they generate stronger research and better solutions.

8. Leadership Is Measured by Service

Research leadership is demonstrated through integrity, generosity, mentorship, collaboration and the ability to enable others to succeed.

9. Knowledge Must Influence Action

- Research should:
- Inform policy.
- Improve practice.
- Support innovation.
- Strengthen institutions.
- Generate measurable societal benefit.

10. Wellbeing Is the Foundation of Sustainable Development

Healthy societies depend upon healthy people. Economic, technological and environmental progress should ultimately contribute to human wellbeing.

11. Collaboration Creates Transformation

Complex challenges cannot be solved alone. Transformation emerges through partnership across disciplines, sectors, institutions and communities.

12. Human Flourishing Is Our Highest Aspiration

Every activity undertaken by WRN should contribute towards creating conditions in which women, communities and societies are able to flourish. Human flourishing remains the ultimate measure of our success.

2.3 The Responsibility We Accept

These beliefs represent more than aspirations. They establish responsibilities; responsibilities to conduct ethical research.

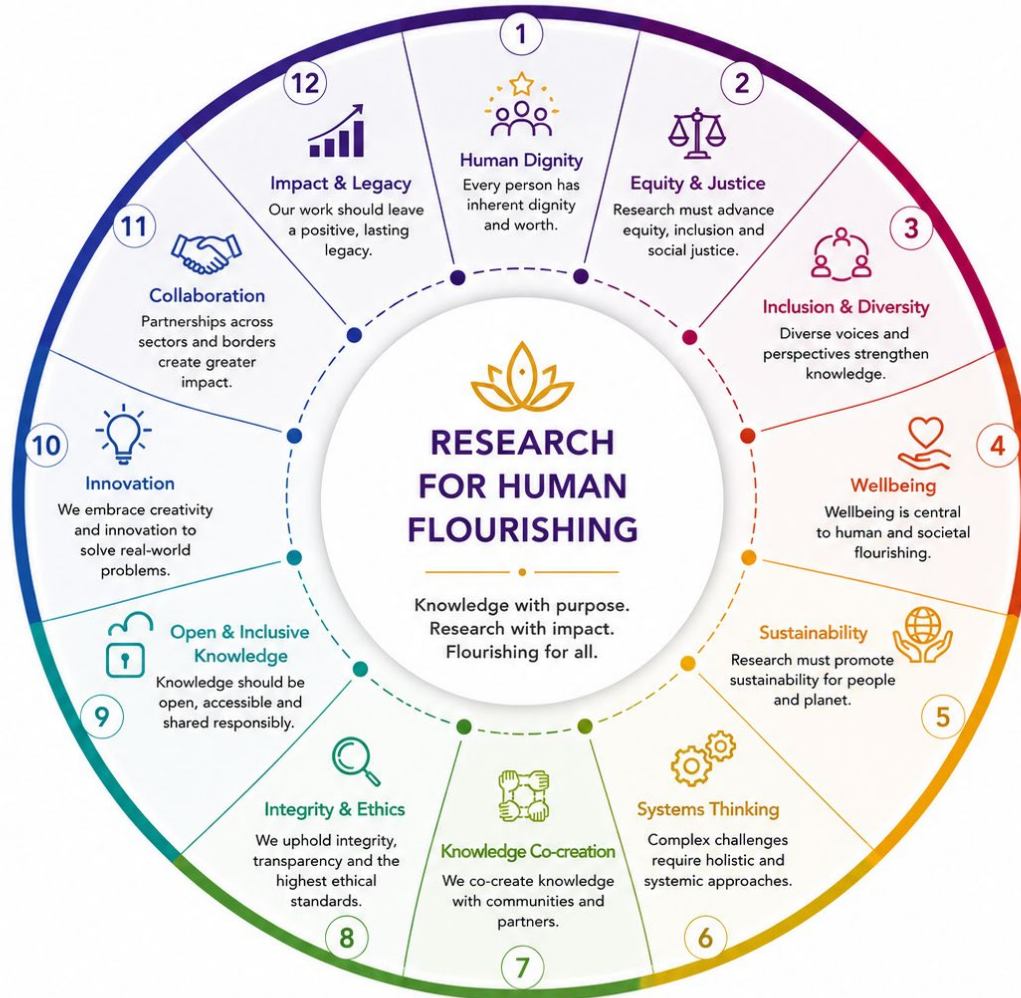
- To strengthen future researchers.
- To listen before leading.
- To value diverse forms of knowledge.
- To challenge injustice.
- To influence policy.
- To improve practice.
- To remain accountable to the communities whose lives our research seeks to improve.

Research carries privilege. Privilege carries responsibility. WRN accepts that responsibility.

FIGURE 2.1

The Twelve Beliefs

Our shared beliefs that guide every aspect of our work



Women Research Network

Research for Human Flourishing

TYPE: PHILOSOPHY

Chapter Summary

The WRN Manifesto establishes the philosophical commitments that define our organisation. These commitments provide the moral foundation for the research philosophy presented in the next chapter.

If the Manifesto explains what WRN believes, the Research Philosophy explains how those beliefs shape the way we understand knowledge, research and societal transformation.

CHAPTER 3

The WRN Philosophy of Research for Human Flourishing

Towards a New Paradigm for Research in the Twenty-First Century

"Research should not be judged solely by the knowledge it produces, but by the futures it helps create."

Opening Reflection

Every era produces new ways of understanding the purpose of research.

The scientific revolution transformed humanity's understanding of observation and experimentation. The twentieth century expanded the role of research in driving technological innovation, economic growth, and public policy. The twenty-first century now presents a different challenge. Humanity possesses unprecedented scientific capability, yet many of the world's most pressing problems remain deeply interconnected and persistently unequal.

Climate change cannot be separated from health. Artificial intelligence cannot be separated from ethics. Entrepreneurship cannot be separated from wellbeing. Education cannot be separated from opportunity. Sustainable development cannot be separated from justice.

These realities demand more than new discoveries; they require a renewed understanding of why research exists and how it should contribute to society.

The Women Research Network (WRN) proposes that the next evolution of research should be organised around a single organising purpose:

Creating the conditions for human flourishing.

This philosophy does not replace existing research traditions. Rather, it seeks to integrate them into a coherent framework that places human wellbeing, dignity, justice, opportunity, and sustainability at the centre of research practice.

3.1 Why Research Needs a New Paradigm

Research has traditionally been organised around disciplines. Universities are structured into faculties of medicine, business, engineering, education, law, social sciences, and environmental studies. This organisation has enabled remarkable advances within individual fields and fostered deep disciplinary expertise.

Yet the challenges confronting society rarely conform to disciplinary boundaries.

The lived experience of a woman navigating poverty, climate vulnerability, digital exclusion, caregiving responsibilities, and insecure employment is not experienced as separate problems. These dimensions interact continuously, reinforcing one another through complex relationships that no single discipline can fully explain.

As a result, contemporary research faces a paradox. While disciplinary excellence has never been stronger, many societal challenges require forms of collaboration that extend beyond disciplinary expertise.

WRN therefore argues that research should increasingly be organised around **human challenges** rather than disciplinary categories.

This does not diminish the importance of disciplines; instead, it positions them as complementary contributors to solving complex human problems.

3.2 Theoretical Foundations

The WRN Philosophy is not developed in isolation. It builds upon, integrates, and extends several influential intellectual traditions.

a. Capability and Human Development

The work of Amartya Sen reframed development by arguing that progress should be understood through people's capabilities and freedoms rather than economic growth alone. Martha Nussbaum further developed this perspective by emphasising the conditions required for individuals to live lives they have reason to value.

WRN extends this tradition by asking not only what capabilities people possess, but how research itself can contribute to expanding those capabilities through knowledge creation, institutional change, and societal transformation.

b. Wellbeing and Flourishing

Contemporary wellbeing research, including the work of Martin Seligman on flourishing, has demonstrated that quality of life extends beyond economic indicators to encompass psychological wellbeing, relationships, purpose, engagement, and achievement.

WRN builds upon these insights while broadening the concept of flourishing beyond individual psychology. Human flourishing is understood as an interaction between personal capabilities, institutional environments, social relationships, environmental sustainability, cultural identity, leadership, opportunity, and justice.

c. Systems Thinking

Systems thinking demonstrates that complex societal problems emerge through interactions between multiple interconnected components rather than isolated causes.

WRN adopts this perspective by recognising that health, education, entrepreneurship, climate resilience, governance, digital transformation, and community wellbeing are mutually reinforcing elements within broader systems of human development.

This understanding underpins the WRN Flourishing Ecosystem Model.

d. Knowledge Co-creation

Increasing recognition has been given to participatory research, community engagement, and knowledge co-production as essential components of impactful research.

WRN embraces these principles while arguing that communities should not merely contribute data to research. They should participate in defining research questions, interpreting findings, and shaping the translation of knowledge into action.

Knowledge is therefore understood as a collaborative achievement rather than a product generated exclusively within universities.

e. Decolonial Scholarship

WRN recognises that knowledge has historically been shaped by unequal power relations within global research systems.

The philosophy therefore affirms the Global South as a producer of theory, innovation, methodological creativity, and intellectual leadership rather than solely as a site of empirical investigation.

Research for human flourishing requires reciprocal knowledge exchange in which diverse epistemologies enrich global understanding.

3.3 The WRN Proposition

Drawing upon these traditions, WRN advances the following proposition:

Research is a dynamic, collaborative ecosystem through which diverse forms of knowledge are created, translated and applied to expand the conditions for human flourishing.

This proposition represents the intellectual foundation of WRN.

It repositions research as:

- collaborative rather than extractive;
- interdisciplinary rather than fragmented;
- translational rather than isolated;

- inclusive rather than exclusive;
- future-oriented rather than retrospective;
- centred on human flourishing rather than academic outputs alone.

3.4 The Five Commitments of the WRN Philosophy

The philosophy translates into five enduring institutional commitments.

1. People before disciplines

Research begins with lived experience. Disciplines provide perspectives, but people define the questions that matter.

2. Knowledge through partnership

Knowledge is co-created with researchers, practitioners, policymakers, communities, and industry.

3. Impact through translation

Research achieves value when evidence informs policy, practice, innovation, education, and institutional change.

4. Leadership through service

Research leadership is measured by the ability to develop others, strengthen institutions, and create opportunities for future generations.

5. Flourishing as the ultimate outcome

The highest aspiration of research is to contribute to healthier lives, stronger communities, more just societies, and sustainable futures.

3.5 The WRN Research System

The WRN Philosophy is operationalised through an integrated research system comprising four complementary components:

- **The WRN Flourishing Ecosystem Model (FEM)** explains the interconnected conditions that shape human flourishing.
- **The WRN Flourishing Lens** frames every research question by asking how a phenomenon influences the conditions for flourishing.
- **The WRN Change Pathway** describes how collaborative research translates into policy, institutional, and societal transformation.

- **The WRN Research Cycle** provides a continuous process for identifying challenges, co-designing research, generating knowledge, translating evidence, evaluating impact, and informing future inquiry.

Together these components form a coherent framework through which research is designed, conducted, translated, and evaluated.

3.6 Implications for the Future of Research

The WRN Philosophy proposes a shift in how research organisations define success.

Traditionally, excellence has been assessed through publications, citations, rankings, and grant income. These remain important indicators of scholarly achievement, but they do not fully capture research's societal purpose.

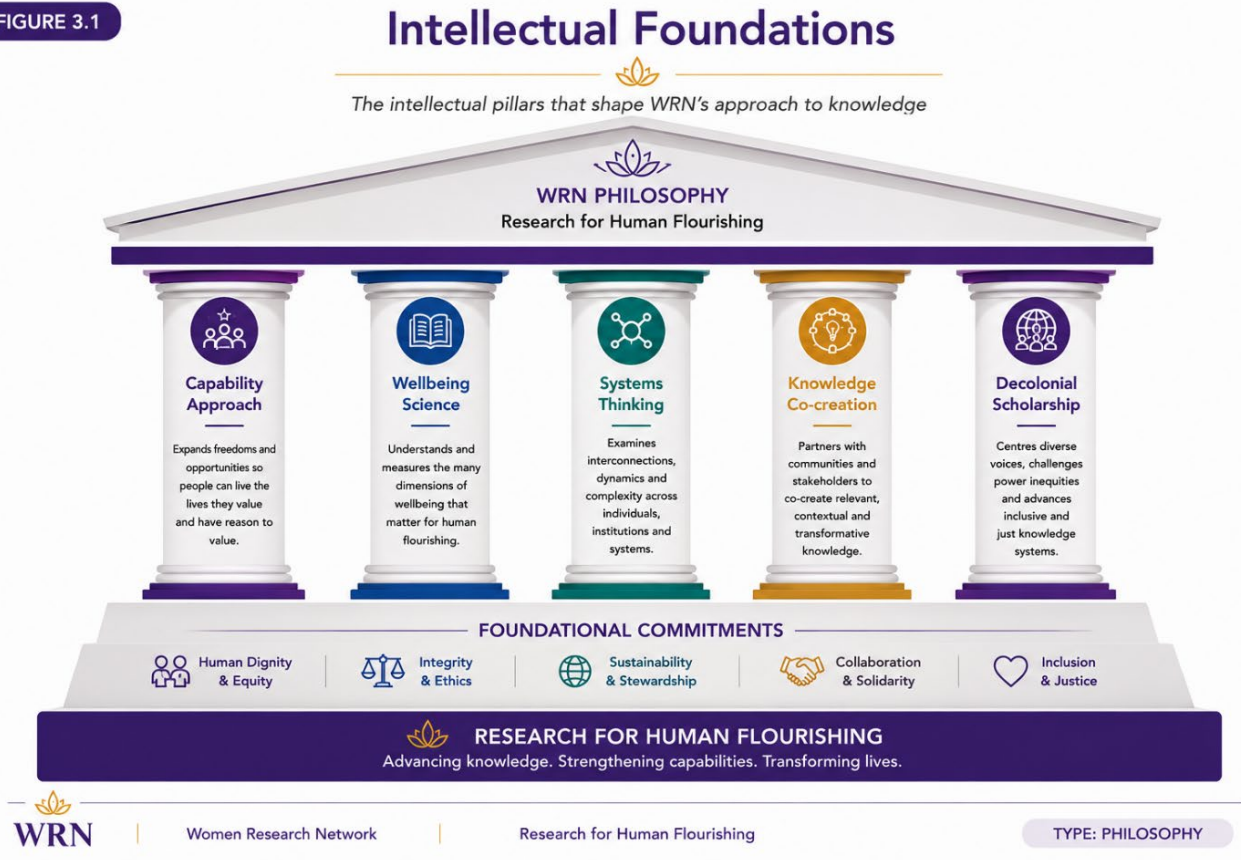
Research organisations of the future will increasingly be evaluated by their capacity to:

- strengthen research ecosystems;
- develop future leaders;
- build equitable partnerships;
- influence policy and practice;
- improve health and wellbeing;
- contribute to sustainable development; and
- create the conditions in which people and communities flourish.

This represents not a rejection of academic excellence, but its expansion.

The future of research lies in integrating scientific rigour with societal relevance.

FIGURE 3.1



Chapter Summary

The WRN Philosophy of Research for Human Flourishing provides the intellectual foundation for the organisation's work. It synthesises insights from capability theory, wellbeing science, systems thinking, knowledge co-creation, sustainability, and decolonial scholarship into a coherent philosophy that places human flourishing at the centre of research.

The chapters that follow translate this philosophy into practice through the WRN Research System, beginning with the **Flourishing Ecosystem Model**, which explains how interconnected conditions shape opportunities for human flourishing.

PART TWO

The WRN Research System

CHAPTER 4

The WRN Flourishing Ecosystem Model (FEM)

Understanding the Conditions for Human Flourishing

"People do not flourish because of a single intervention. They flourish because multiple conditions come together within a supportive ecosystem."

Opening Reflection

Human lives are shaped by relationships rather than isolated events.

A child's educational opportunity is influenced by health, family support, community safety, public policy, technology, economic conditions, environmental quality, and the institutions that surround them. Likewise, women's entrepreneurship is influenced not only by finance, but also by education, digital access, social norms, leadership opportunities, health, governance, infrastructure, and public policy.

These examples illustrate a fundamental principle. Human flourishing does not emerge from individual interventions. It emerges from ecosystems.

Research therefore requires models capable of understanding complexity rather than reducing it. The WRN Flourishing Ecosystem Model provides such a framework.

4.1 Why an Ecosystem Model?

Many existing research frameworks focus on one dimension of human development. Some prioritise economic growth, others focus on health, others examine education while others investigate institutions.

Each provides valuable insight. However, human flourishing emerges through the interaction of all these factors.

The WRN Flourishing Ecosystem Model (FEM) recognises flourishing as a dynamic, interconnected, and adaptive process rather than a fixed outcome.

Rather than asking, *"Which factor matters most?"* the model asks,

"How do multiple conditions interact to create opportunities for flourishing?"

This shift from isolated variables to interconnected systems represents one of the defining features of the WRN Philosophy.

4.2 The Central Proposition

The WRN Flourishing Ecosystem Model is built upon a single proposition:

Human flourishing emerges when capabilities, resources, institutions and systems interact to enable women and communities to transform knowledge into healthy, meaningful, equitable and sustainable lives.

This proposition introduces five important ideas:

- a) First, flourishing is multidimensional.
- b) Second, flourishing is relational.
- c) Third, flourishing is dynamic.
- d) Fourth, flourishing is context-dependent.
- e) Finally, flourishing is shaped by both individual agency and structural conditions.

4.3 The Five Layers of the Ecosystem

The model consists of five interconnected layers.

1. Human Flourishing

At the centre of the model lies human flourishing.

WRN understands flourishing as the capability of individuals and communities to live healthy, meaningful, secure, connected and fulfilling lives while having equitable opportunities to realise their potential and contribute positively to society.

Flourishing therefore encompasses:

- Physical health
- Mental wellbeing
- Purpose
- Agency
- Belonging
- Opportunity
- Dignity
- Environmental security
- Leadership
- Sustainable livelihoods

Human flourishing is the organising purpose of WRN. Everything else in the ecosystem exists to support it.

2. Human Capabilities

Flourishing depends upon the capabilities people possess.

Drawing upon capability theory while extending it, WRN identifies eight interconnected capabilities.

- Health capability
- Educational capability
- Digital capability
- Economic capability
- Leadership capability
- Social capability
- Psychological capability
- Adaptive capability

Capabilities represent what people are able to do and become. They are strengthened through opportunity, learning, and supportive environments.

3. Enabling Resources

Capabilities require resources to become meaningful. WRN identifies enabling resources including:

- Knowledge
- Technology
- Finance
- Energy
- Infrastructure
- Information
- Networks
- Mentorship
- Research

Resources are not ends in themselves. Their value lies in enabling capabilities to be exercised.

4. Institutions

People flourish within institutions. Institutions create the rules, relationships and environments that influence opportunity. WRN recognises institutions including:

- Families
- Schools
- Universities
- Healthcare systems
- Governments

- Businesses
- Civil society
- International organisations

Strong institutions create opportunities. Weak institutions constrain them.

5. Global Systems

The outer layer represents the wider systems within which institutions operate. These include:

- Climate change
- Political systems
- Economic systems
- Digital transformation
- Artificial intelligence
- Culture
- Globalisation
- Demographic change
- Environmental change

These forces influence every other layer of the ecosystem.

4.4 Knowledge as the Connecting Thread

Unlike many conceptual models, the WRN Flourishing Ecosystem Model does not position knowledge within a single layer.

Knowledge flows throughout the ecosystem. Knowledge connects:

- Individuals.
- Communities.
- Institutions.
- Governments.
- Researchers.
- Industry.
- Policy.
- Innovation.

Knowledge is therefore understood as the bloodstream of the ecosystem. It continuously circulates, adapts and evolves through interaction. This principle explains why WRN places such strong emphasis on collaboration and knowledge co-creation.

4.5 Dynamic Relationships

The model rejects linear understandings of change. Instead, flourishing emerges through continuous interaction.

For example:

- Improved education strengthens leadership.
- Leadership influences policy.
- Policy improves healthcare.
- Healthcare enhances wellbeing.
- Wellbeing supports learning.
- Learning strengthens innovation.
- Innovation informs policy.

The ecosystem therefore evolves through reinforcing feedback loops rather than one-way causal relationships.

This dynamic perspective reflects contemporary systems thinking and complexity science while remaining grounded in lived human experience.

4.6 Implications for Research

The Flourishing Ecosystem Model changes how research questions are framed.

Rather than asking: *"Does digital technology improve entrepreneurship?"*

WRN asks: *"How does digital technology influence the conditions for human flourishing through entrepreneurship?"*

Similarly, rather than asking: *"Does education improve employment?"*

WRN asks: *"How does education strengthen the capabilities and institutional conditions required for flourishing?"*

The model therefore encourages researchers to examine relationships rather than isolated variables.

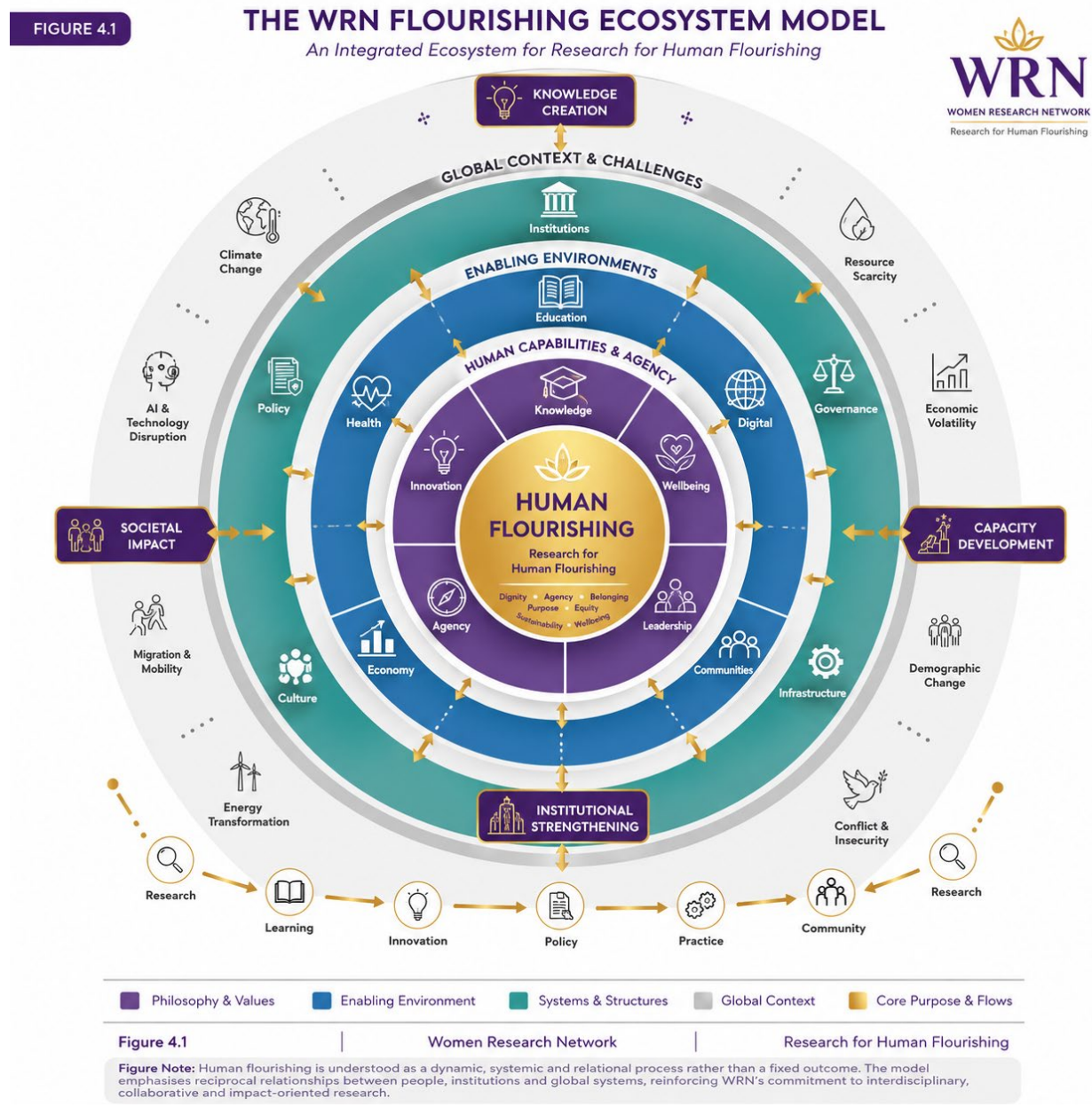
4.7 Implications for Policy

For policymakers, the model demonstrates that sustainable change rarely results from single-sector interventions.

- Health policies influence education.
- Education influences employment.
- Employment influences wellbeing.
- Wellbeing influences social cohesion.

- Climate policy influences livelihoods.
- Integrated policy therefore becomes essential.

The model encourages governments and development organisations to design interventions that recognise the interconnected nature of human flourishing.



Chapter Summary

The WRN Flourishing Ecosystem Model provides the conceptual foundation for understanding the conditions that enable human flourishing. By integrating capabilities, resources, institutions,

systems and knowledge within a single dynamic ecosystem, the model offers a new interdisciplinary framework for research, policy and practice.

The next chapter introduces the **WRN Flourishing Lens**, demonstrating how every WRN research project is framed through the question:

How does this phenomenon shape the conditions for human flourishing?

CHAPTER 5

The WRN Flourishing Lens

Framing Research Through the Conditions for Human Flourishing

"Research questions shape the knowledge we create. Better questions create better futures."

Opening Reflection

Every research project begins with a question.

The quality of research is therefore determined long before data are collected or analyses are undertaken. It begins with how researchers frame the problem they seek to understand.

Traditionally, research questions have been shaped by disciplinary interests. Business researchers investigate firms. Educational researchers examine learning. Public health researchers study disease. Environmental scientists explore climate systems.

These disciplinary perspectives have generated significant knowledge. However, they often examine isolated dimensions of complex human realities.

The WRN Flourishing Lens proposes a different starting point. Rather than asking what happens within a discipline, WRN asks:

How does this phenomenon shape the conditions for human flourishing?

This question becomes the organising principle for every WRN project.

The Flourishing Lens therefore represents not simply a research tool, but a different philosophy of inquiry.

5.1 Why a Flourishing Lens?

Every research project involves choices.

Researchers decide:

- what questions to ask;

- what evidence to collect;
- whose voices to include;
- what outcomes to measure;
- how findings should be interpreted.

These decisions are influenced by assumptions about what matters.

The WRN Flourishing Lens makes those assumptions explicit.

It asks researchers to begin with people rather than disciplines. Instead of asking,

"How does artificial intelligence influence employment?"

the Lens asks,

"How does artificial intelligence shape the conditions that enable or constrain human flourishing?"

This subtle shift broadens the scope of inquiry and encourages researchers to consider multiple dimensions of human experience simultaneously.

5.2 The Central Question

Every WRN project begins with one foundational question.

The WRN Question:

How does this phenomenon shape the conditions for human flourishing?

Every subsequent research question emerges from this proposition. The phenomenon may be:

- Artificial Intelligence
- Entrepreneurship
- Climate Change
- Digital Transformation
- Education
- Migration
- Health Systems
- Leadership
- Governance

- Energy Transition
- Financial Inclusion
- Social Innovation

The destination remains the same - Human flourishing.

5.3 The Six Dimensions of the Flourishing Lens

The WRN Lens encourages researchers to examine every phenomenon through six interconnected dimensions.

1. People

- Who experiences this phenomenon?
- Whose voices are missing?
- Who benefits?
- Who is excluded?
- Who is most vulnerable?

2. Conditions

- What conditions enable flourishing?
- What conditions constrain flourishing?
- Which structural barriers exist?
- Which opportunities are available?

3. Systems

- Which institutions influence these conditions?
- How do policies shape outcomes?
- How do social norms reinforce inequality?
- What wider systems are involved?

4. Knowledge

- What knowledge already exists?
- Whose knowledge is recognised?
- Whose knowledge is ignored?
- How can knowledge be co-created?

5. Transformation

- How can research contribute to change?
- What interventions are possible?
- How can policy improve conditions?

- How can institutions respond?

6. Flourishing

Ultimately, how will this research contribute to:

- Healthier lives?
- Greater wellbeing?
- Improved opportunity?
- Justice?
- Agency?
- Leadership?
- Sustainability?
- Community resilience?

This final question ensures that flourishing remains the purpose of research rather than simply an outcome to be measured.

5.4 Applying the Flourishing Lens

The strength of the Lens lies in its flexibility. Different projects begin with different phenomena.

The organising question remains constant.

Example 1: Artificial Intelligence

How does AI influence:

- education?
- employment?
- health?
- wellbeing?
- inequality?
- leadership?
- opportunity?

And ultimately, **Human Flourishing**

Example 2: Women's Entrepreneurship

How does entrepreneurship strengthen:

- agency?
- economic security?
- wellbeing?
- leadership?

- resilience?
- family livelihoods?

And ultimately, **Human Flourishing**

Example 3: Climate Change

How does climate change influence:

- health?
- migration?
- livelihoods?
- food security?
- education?
- community resilience?

And ultimately, **Human Flourishing**

Example 4: Girls in STEM

- How does STEM participation shape:
 - confidence?
 - aspirations?
 - educational opportunity?
 - employment?
 - leadership?
 - long-term wellbeing?

And ultimately, **Human Flourishing**

5.5 The Flourishing Lens and Research Design

The Lens influences every stage of research. It shapes:

- Research questions.
- Theoretical frameworks.
- Methodology.
- Sampling.
- Data collection.
- Analysis.
- Interpretation.
- Impact pathways.
- Knowledge mobilisation.

Rather than functioning as an additional analytical tool, the Lens becomes the perspective through which the entire research process is viewed.

5.6 Relationship to the Flourishing Ecosystem Model

The Flourishing Lens should not be understood independently of the Flourishing Ecosystem Model. The relationship is straightforward. The Ecosystem Model explains: *What creates flourishing?*

The Flourishing Lens asks: *How does this phenomenon influence those conditions?*

The two frameworks therefore operate together.

- The Ecosystem provides the map.
- The Lens provides the perspective.

5.7 Implications for Research Excellence

The Flourishing Lens encourages researchers to move beyond narrow disciplinary explanations towards richer interdisciplinary understanding. It promotes:

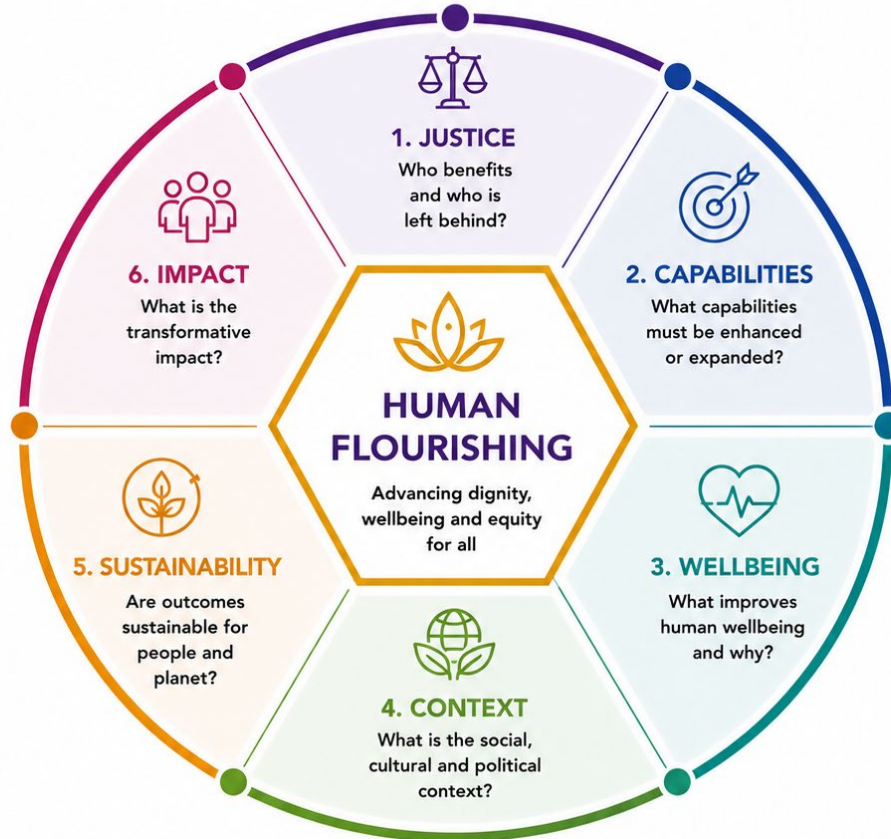
- systems thinking;
- inclusive methodologies;
- community engagement;
- policy relevance;
- ethical research;
- knowledge translation;
- societal impact.

In doing so, it supports a broader conception of research excellence, one that combines scientific rigour with meaningful contribution to society.

FIGURE 5.1

The WRN Flourishing Lens

A multidimensional lens for Research for Human Flourishing



HOW TO USE THIS LENS



Examine research questions



Design studies & interventions



Engage stakeholders meaningfully



Generate evidence for impact



Inform policy, practice & systems



Women Research Network

Research for Human Flourishing

TYPE: FRAMEWORK

Chapter Summary

The WRN Flourishing Lens provides a practical framework for framing research questions around the conditions for human flourishing.

By asking every project to consider how a phenomenon shapes those conditions, the Lens creates coherence across WRN's diverse portfolio while encouraging interdisciplinary inquiry, ethical partnership, and societal relevance.

The next chapter introduces the **WRN Change Pathway**, demonstrating how research moves from knowledge creation to policy, institutional, community, and societal transformation.

CHAPTER 6

The WRN Change Pathway

From Knowledge to Human Flourishing

"Research creates its greatest value when knowledge becomes action, action strengthens systems, and systems improve lives."

Opening Reflection

The relationship between research and societal change has never been straightforward.

History is filled with examples of groundbreaking discoveries that remained underutilised for decades, while relatively modest pieces of evidence transformed public policy almost immediately. Knowledge alone does not create change. Change occurs when knowledge is translated, interpreted, adopted, implemented, and sustained across institutions, communities, and societies.

Traditional understandings of research impact often assume a linear process in which evidence is generated, published, disseminated, and eventually influences decision-making. While this sequence captures important elements of knowledge translation, it rarely reflects the complexity of how change actually occurs.

- Policies are shaped by politics as well as evidence.
- Communities adapt innovations according to culture and local realities.
- Institutions respond to incentives, leadership, and organisational capacity.
- Researchers themselves learn from practice, refining theories and generating new questions.
- Change is therefore dynamic rather than linear.

The WRN Change Pathway recognises this complexity.

It provides a systems-based framework for understanding how collaborative research contributes to healthier lives, stronger institutions, more equitable societies, and ultimately human flourishing.

6.1 Why a Change Pathway?

Research organisations increasingly recognise that success cannot be measured solely by academic outputs. Funders, governments, communities and partners increasingly expect research to demonstrate meaningful societal benefit. Yet demonstrating impact requires more than counting publications or policy citations. It requires understanding the processes through which knowledge influences people, organisations and systems.

The WRN Change Pathway responds to this challenge by positioning research within a broader ecosystem of transformation. Rather than viewing impact as the final stage of research, WRN understands impact as an ongoing process of learning, partnership, adaptation and collective action.

The pathway therefore explains not simply **what WRN produces**, but **how WRN contributes to societal transformation**.

6.2 The WRN Proposition

The WRN Change Pathway is built upon a central proposition:

Research creates lasting societal change when knowledge is collaboratively generated, translated into action, embedded within institutions, adopted by communities, and continuously refined through learning.

This proposition reflects five key principles:

- Change is collaborative.
- Knowledge must be translated.
- Institutions enable sustainability.
- Communities are active partners.
- Flourishing is the ultimate outcome.

6.3 The Eight Stages of the WRN Change Pathway

The Change Pathway consists of eight interconnected stages. Unlike traditional linear models, each stage informs and strengthens the others through continuous feedback and learning.

Stage One: Global Challenges

Every WRN project begins with a challenge that matters. These challenges may include:

- health inequalities;
- educational exclusion;
- climate vulnerability;
- gender inequality;
- digital transformation;
- migration;
- entrepreneurship;
- leadership;
- sustainable development.

Research begins with real-world challenges rather than disciplinary curiosity alone.

Stage Two: Collaborative Research

Solutions emerge through collaboration. WRN brings together:

- researchers;
- communities;
- policymakers;
- practitioners;
- businesses;
- civil society;
- international organisations;
- philanthropic partners.

Knowledge is co-created rather than produced in isolation.

Stage Three: Knowledge Creation

Collaboration generates new knowledge. This may include:

- empirical evidence;
- conceptual models;
- methodologies;
- policy analysis;
- innovation;
- practical solutions.

Knowledge creation remains rigorous while responding to societal priorities.

Stage Four: Capacity Development

Knowledge alone cannot transform society, People do. WRN therefore invests in developing:

- researchers;
- research leaders;
- community partners;
- institutions;
- practitioners;
- early career scholars.

Capacity development ensures that knowledge can be sustained beyond individual projects.

Stage Five: Institutional Strengthening

Research creates greater impact when institutions become stronger. WRN supports:

- universities;

- governments;
- schools;
- healthcare organisations;
- NGOs;
- research institutes;
- businesses.

Institutional strengthening includes governance, leadership, partnerships, research culture, ethics and knowledge systems.

Stage Six: Policy and Practice Change

Evidence becomes meaningful when it informs decisions. WRN therefore seeks to influence:

- public policy;
- professional practice;
- organisational strategy;
- educational programmes;
- healthcare delivery;
- entrepreneurial ecosystems.

Knowledge is translated into action through dialogue, partnership and evidence-informed decision-making.

Stage Seven: Community Transformation

Improved policies and stronger institutions create opportunities for communities to flourish.

Transformation may include:

- improved wellbeing;
- educational opportunity;
- stronger livelihoods;
- greater inclusion;
- healthier environments;
- enhanced resilience;
- increased leadership;
- stronger social cohesion.

Communities are not passive recipients of change. They actively shape, adapt and sustain transformation.

Stage Eight: Human Flourishing

The final purpose of the pathway is not institutional success. It is human flourishing. Research contributes to:

- healthier lives;
- meaningful work;
- equitable opportunity;
- environmental sustainability;
- resilient communities;
- inclusive leadership;
- dignity;
- hope.

Human flourishing therefore represents both the destination and the beginning of the next cycle of learning.

6.4 The Feedback Loops

The WRN Change Pathway deliberately rejects one-way models of impact.

- Every stage generates new knowledge.
- Communities reshape policy priorities.
- Policy generates new research questions.
- Institutions create new partnerships.
- Researchers learn from implementation.

This continuous learning strengthens both research quality and societal impact. The pathway therefore functions as an adaptive learning system rather than a linear sequence.

6.5 Measuring Change

The pathway also provides WRN's impact framework.

Knowledge Impact

- New theories
- Publications
- Data
- Frameworks
- Evidence syntheses

Capacity Impact

- Researchers mentored
- Women research leaders developed

- Community research capability
- Interdisciplinary collaborations

Institutional Impact

- Research culture strengthened
- Governance improved
- Partnerships established
- Research systems enhanced

Policy and Practice Impact

- Policies informed
- Professional practice improved
- Educational programmes influenced
- Innovation adopted

Flourishing Impact

- Health improved
- Wellbeing enhanced
- Opportunities expanded
- Leadership strengthened
- Sustainable livelihoods supported
- Communities empowered

This multi-level approach reflects WRN's commitment to measuring what truly matters.

6.6 Relationship to the WRN Research System

The Change Pathway completes the third component of the WRN Research System. The relationships are complementary.

The **Flourishing Ecosystem Model** explains the interconnected conditions that enable flourishing.

The **Flourishing Lens** frames research questions around those conditions.

The **Change Pathway** explains how research contributes to transforming those conditions.

The next chapter introduces the final component:

The **WRN Research Cycle**.

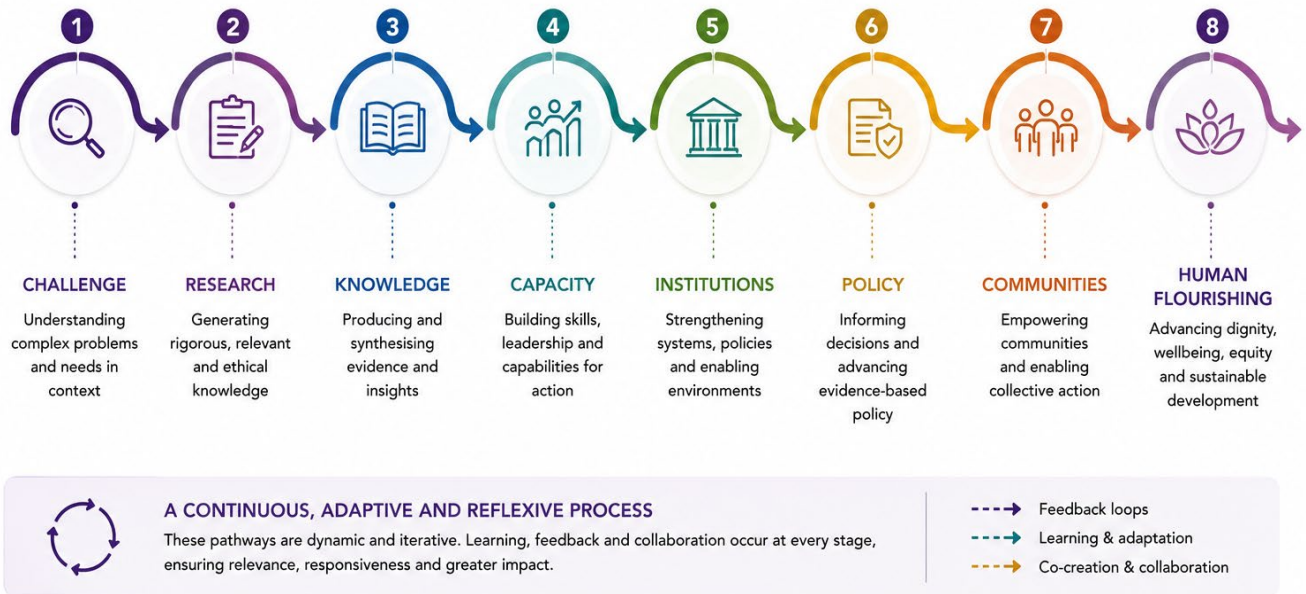
This continuous cycle explains how WRN designs, conducts, evaluates and continuously improves research through iterative learning.

FIGURE 6.1

The WRN Flourishing Pathways



From challenge to human flourishing: a pathway of transformation



Women Research Network

Research for Human Flourishing

TYPE: PROCESS

Chapter Summary

The WRN Change Pathway provides an integrated framework for understanding how research contributes to societal transformation.

By recognising collaboration, capacity, institutions, policy, communities and continuous learning as interconnected elements of change, the pathway expands traditional understandings of research impact and places human flourishing at the centre of organisational success.

CHAPTER 7

The WRN Research Cycle

A Continuous Learning System for Research for Human Flourishing

"Research does not end when findings are published. Research begins again when those findings improve lives and generate new questions."

Opening Reflection

Research is often presented as a linear process. Researchers identify a problem, design a study, collect data, analyse findings, publish results, and move on to the next project. In reality, meaningful research rarely follows such a straightforward path.

- Communities reshape research questions.
- Unexpected findings generate new theories.
- Policy implementation reveals unforeseen challenges.
- Practice challenges existing assumptions.

Researchers learn continuously from the people, institutions and systems they seek to understand. Research is therefore not a sequence. It is a cycle of continuous learning.

The WRN Research Cycle reflects this philosophy. Rather than viewing research as a project with a beginning and an end, WRN understands research as an ongoing process of discovery, collaboration, translation and renewal that continually strengthens the conditions for human flourishing.

7.1 Why a Research Cycle?

Traditional research models frequently conclude with publication or dissemination. However, publication is not the end of research.

- Publication creates opportunities for new conversations.
- Policy generates new questions.
- Communities identify new priorities.
- Institutions develop new capabilities.
- Researchers refine theories.

The WRN Research Cycle therefore positions learning rather than completion as the defining characteristic of excellent research. Every project becomes the beginning of the next.

7.2 The WRN Proposition

The WRN Research Cycle is founded upon a simple proposition:

Research is a continuous process of learning through which questions, partnerships, knowledge and action evolve together to strengthen the conditions for human flourishing.

Research therefore becomes:

- adaptive;
- collaborative;
- reflexive;
- interdisciplinary;
- impact-oriented;
- future-focused.

7.3 The Seven Stages of the Research Cycle

Stage One: Identify a Flourishing Challenge

Every WRN project begins with a challenge that matters to people's lives. Rather than beginning with disciplinary gaps alone, WRN begins with questions emerging from:

- communities;
- policy;
- practice;
- lived experience;
- emerging global challenges;
- existing evidence.

Examples include:

- declining STEM participation among girls;
- women's digital exclusion;
- climate vulnerability;
- maternal health;
- entrepreneurship ecosystems;
- AI and wellbeing.

The starting point is always the same: **What challenge limits human flourishing?**

Stage Two: Co-design Research

Research questions are refined collaboratively. Researchers work alongside:

- communities;
- practitioners;
- policymakers;
- industry;

- civil society;
- interdisciplinary colleagues.

Together they determine:

- research priorities;
- appropriate methods;
- ethical considerations;
- expected impact;
- pathways for knowledge translation.

Research design therefore becomes a shared endeavour rather than an individual activity.

Stage Three: Generate Knowledge

Research is conducted using rigorous and appropriate methodologies. WRN embraces methodological pluralism. Research may include:

- qualitative methods;
- quantitative analysis;
- mixed methods;
- participatory approaches;
- systems modelling;
- implementation research;
- digital methods;
- policy analysis.

Methodological choices are determined by the research question rather than disciplinary tradition.

Stage Four: Translate Evidence

Knowledge achieves value when it becomes accessible and useful.

Translation includes:

- journal publications;
- policy briefs;
- practitioner toolkits;
- community reports;
- training programmes;
- digital resources;
- workshops;
- media engagement;
- educational materials.

Translation is therefore integrated throughout research rather than occurring only after publication.

Stage Five: Influence Policy and Practice

Evidence is used to improve decision-making. Research contributes to:

- legislation;
- organisational strategy;
- educational practice;
- healthcare delivery;
- entrepreneurial ecosystems;
- climate policy;
- institutional governance.

Researchers remain engaged throughout implementation, supporting organisations in adapting evidence to local contexts.

Stage Six: Measure Flourishing

WRN evaluates whether research has strengthened the conditions for human flourishing. Evaluation considers multiple dimensions:

- a) Has health improved?
- b) Has wellbeing strengthened?
- c) Has educational opportunity expanded?
- d) Have institutions become stronger?
- e) Has leadership increased?
- f) Have communities become more resilient?
- g) Has policy become more inclusive?

Success is measured by changes in people's lives rather than outputs alone.

Stage Seven: Generate New Questions

Every research project concludes by asking:

- a) What have we learned?
- b) What remains unknown?
- c) What new challenges have emerged?
- d) How should theory evolve?
- e) What partnerships should be strengthened?

Learning becomes the beginning of the next research cycle. The cycle therefore continues indefinitely.

7.4 Reflection and Learning

Continuous reflection distinguishes the WRN Research Cycle from traditional project management models. Reflection occurs:

- before research,
- during research,
- after research,
- and between projects.

Learning is therefore embedded throughout the research process rather than treated as a final evaluation activity.

7.5 Relationship to the WRN Research System

The Research Cycle completes the WRN Research System. Together, the four components answer four complementary questions.

Component	Question Answered
Flourishing Ecosystem Model	What conditions enable human flourishing?
Flourishing Lens	How does this phenomenon influence those conditions?
Change Pathway	How does research contribute to societal transformation?
Research Cycle	How do we continuously generate, translate and improve knowledge?

Together they form an integrated research operating system that guides every WRN project.

7.6 Implications for Research Excellence

The WRN Research Cycle expands traditional understandings of research quality. Excellent research is characterised not only by methodological rigour but also by:

- meaningful partnerships;
- ethical engagement;
- continuous learning;
- interdisciplinary collaboration;
- knowledge translation;
- societal relevance;
- measurable contribution to flourishing.

This perspective aligns research excellence with societal responsibility.

FIGURE 7.1

THE WRN RESEARCH CYCLE

A Continuous Cycle of Inquiry, Action and Flourishing

A participatory, ethical and iterative process that connects knowledge to impact and advances the conditions for human flourishing.



Women Research Network

Research for Human Flourishing

www.wrnresearch.org

Chapter Summary

The WRN Research Cycle provides a practical methodology through which WRN conducts research.

It transforms research from a linear sequence of activities into a continuous learning system that integrates collaboration, rigorous inquiry, knowledge translation, policy engagement and evaluation within a single adaptive process.

The cycle ensures that every WRN project contributes not only to new knowledge but also to stronger partnerships, improved institutions and the continuous advancement of human flourishing.

PART THREE

Building the WRN Institute: From Philosophy to Institution

From Ideas to Institutions

Ideas inspire movements. Institutions sustain them.

The preceding chapters have articulated WRN's philosophy of research for human flourishing and introduced the conceptual foundations that guide our work. Together they establish why WRN exists, how we understand research, and how knowledge contributes to societal transformation.

Ideas alone, however, are insufficient. If research is to improve lives, ideas must be embodied within institutions capable of sustaining collaboration, developing future leaders, translating evidence into action, and creating enduring public value.

Institutions transform aspiration into practice.

- They provide continuity across generations.
- They nurture talent.
- They create cultures.
- They strengthen partnerships.
- They protect integrity.
- They ensure that knowledge continues to serve society long after individual projects have concluded.

Book Three therefore turns from philosophy towards institution building. It asks a different question.

What kind of organisation must WRN become if it is to realise its vision of research for human flourishing?

The chapters that follow present not simply an organisational structure, but an institutional blueprint designed to support collaborative, inclusive, interdisciplinary and globally connected research capable of improving lives.

CHAPTER 8

Vision, Mission and Values

The Identity of the WRN Institute

"Institutions are remembered not for what they own, but for what they make possible."

Opening Reflection

Every enduring institution is defined by a clear sense of purpose.

- Its buildings may change.
- Its leadership will change.
- Its programmes will evolve.
- Its partnerships will expand.

Yet its purpose remains remarkably constant.

- Purpose provides continuity.
- Purpose guides decisions.
- Purpose attracts people who share common aspirations.

For WRN, purpose extends beyond becoming an internationally recognised research organisation. Our purpose is to contribute to a future in which research consistently improves the lives of women, communities and societies.

This purpose shapes every aspect of our institutional identity.

8.1 Our Purpose

WRN exists to advance research that enables women and girls to flourish. We believe that knowledge should improve health, strengthen wellbeing, expand opportunity, inform policy, support innovation and contribute to sustainable futures.

Our purpose therefore extends beyond producing excellent research. We exist to create lasting public value through research.

- Every programme.
- Every partnership.
- Every publication.
- Every researcher.
- Every investment.

Should contribute towards this purpose.

8.2 Our Vision

A World Where Research Enables Human Flourishing

WRN envisions a world in which research serves as one of humanity's most powerful instruments for improving lives. We aspire to a future where:

- women and girls flourish;
- communities are healthier and more resilient;
- institutions are stronger and more inclusive;
- policy is informed by evidence;
- innovation contributes to justice and sustainability;
- knowledge is created collaboratively across cultures and disciplines;
- research strengthens society rather than remaining confined within academia.

By 2035, WRN seeks to be internationally recognised as a leading independent research and innovation organisation advancing women's health, wellbeing and sustainable futures through interdisciplinary collaboration and global partnerships.

8.3 Our Mission

Translating Knowledge into Human Flourishing

Our mission is:

To generate, translate and apply interdisciplinary research that improves health, wellbeing and sustainable futures for women and girls by developing research leaders, strengthening institutions and building equitable partnerships across the Global South and beyond.

This mission reflects five institutional commitments.

- We create knowledge.
- We develop people.
- We strengthen institutions.
- We influence systems.
- We improve lives.

8.4 Our North Star

Every institution requires a single guiding principle that remains constant regardless of changing priorities or funding landscapes.

For WRN this guiding principle is:

Human Flourishing

Every strategic decision should answer one question.

Will this contribute to the conditions in which women and girls flourish?

If the answer is yes, it aligns with WRN. If not, it requires reconsideration.

Human flourishing therefore becomes the compass through which institutional decisions are made.

8.5 Our Institutional Promise

WRN makes a simple promise to everyone who works with us.

- a) Researchers.
- b) Communities.
- c) Governments.
- d) Universities.
- e) Funders.
- f) Partners.
- g) Students.

Our promise is this:

Every research question begins with people. Every partnership begins with respect. Every project seeks to improve lives.

This promise reflects both our philosophy and our expectations of ourselves.

8.6 Our Values

Rather than a long list of aspirational words, I think WRN should adopt **eight institutional values**, each linked to action.

Purpose

We pursue research that serves humanity.

Integrity

We conduct research ethically, transparently and responsibly.

Collaboration

We believe knowledge is strongest when created together.

Inclusion

We value diverse voices, disciplines and ways of knowing.

Excellence

We pursue rigorous, innovative and impactful research.

Courage

We ask difficult questions and challenge assumptions.

Stewardship

We develop people, strengthen institutions and safeguard knowledge for future generations.

Flourishing

We judge our success by the lives our research helps improve.

8.7 The WRN Identity

Everything within WRN should be understood through one sentence.

WRN is an independent research and innovation organisation dedicated to advancing Research for Human Flourishing.

Chapter Summary

This chapter establishes the institutional identity of WRN.

Purpose defines why we exist.

Vision defines the future we seek.

Mission defines how we contribute.

Values define how we behave.

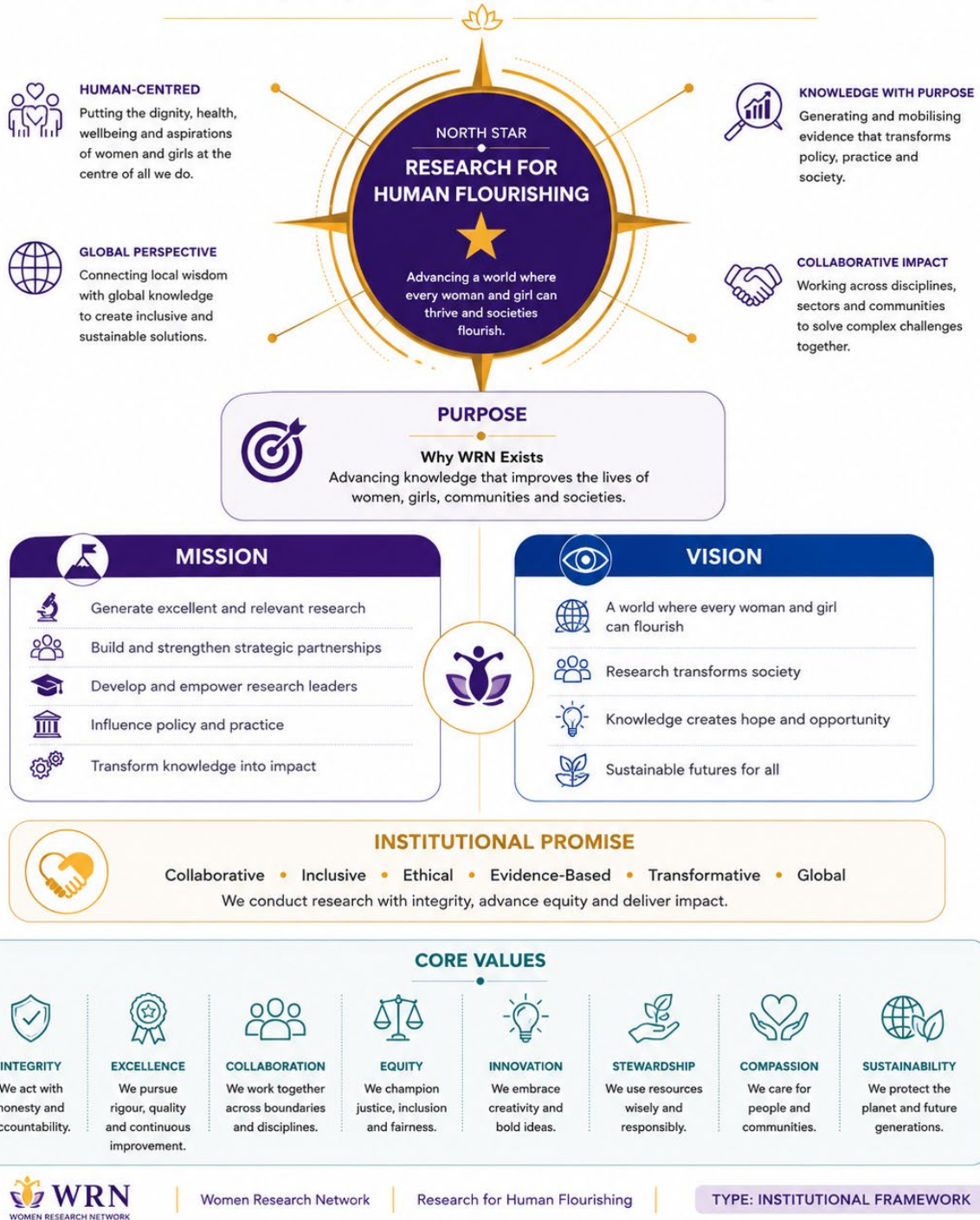
Together they provide the foundation upon which the WRN Institute is built.

The next chapter introduces the six Research Pillars that organise all WRN scholarship around the conditions for human flourishing rather than traditional academic disciplines.

FIGURE 8.1

THE WRN INSTITUTIONAL COMPASS

Guiding Every Decision Towards Human Flourishing



CHAPTER 9

The WRN Institutional Architecture

Organising Research for Human Flourishing

"Enduring institutions are not defined by the number of projects they undertake, but by the coherence of the systems they build."

Opening Reflection

Institutions shape the future by organising knowledge.

The greatest universities, research institutes and foundations are remembered not because they pursued isolated projects, but because they developed enduring structures capable of generating ideas, attracting talent, sustaining partnerships and translating knowledge into societal benefit across generations.

For WRN, institution building is not simply an organisational exercise. It is an extension of our philosophy.

If research exists to advance human flourishing, then the organisation conducting that research must itself be designed to enable collaboration, learning, innovation and long-term societal impact.

The WRN Institutional Architecture represents this design. It provides the blueprint through which philosophy becomes practice, research becomes impact and individual projects contribute to a coherent global movement for human flourishing.

9.1 From Philosophy to Institution

The previous chapters introduced the intellectual foundations of WRN. They established:

- why research matters;
- why human flourishing is the purpose of research;
- how research questions are framed;
- how research contributes to societal transformation;
- how continuous learning strengthens research.

The challenge now becomes institutional.

How should a research organisation be designed if it genuinely believes these principles?

WRN answers this question by aligning every aspect of the organisation around a single organising purpose:

Research for Human Flourishing

Everything that follows exists to advance this purpose.

9.2 The WRN Institutional Model

The WRN Institute is organised as an integrated research ecosystem. Each level performs a distinct role while contributing to a shared institutional mission.

The architecture consists of eight interconnected layers.

1. Research for Human Flourishing

- The institutional purpose.
- The guiding philosophy.
- The North Star that shapes every strategic decision.

Every activity undertaken by WRN ultimately seeks to strengthen the conditions in which women, communities and societies flourish.

2. The WRN Research System

The intellectual operating system of WRN. It consists of four integrated components:

- The Flourishing Ecosystem Model
- The Flourishing Lens
- The Change Pathway
- The Research Cycle

Together these provide the conceptual and methodological foundations for every WRN project.

3. Research Pillars

The six Research Pillars organise WRN's long-term scholarship around the conditions required for flourishing rather than traditional academic disciplines. They represent enduring domains of inquiry capable of evolving over decades.

The six pillars are:

- Flourishing Health
- Flourishing Knowledge
- Flourishing Economies
- Flourishing Societies
- Flourishing Planet
- Flourishing Research Systems

Every WRN activity contributes to one or more pillars.

4. WRN Global Initiatives

Each Research Pillar gives rise to a flagship Global Initiative.

These initiatives represent WRN's principal long-term commitments to addressing global challenges.

a. The WRN Women's Health and Wellbeing Initiative

Advancing interdisciplinary research that improves women's physical, mental and community health across the life course.

b. The WRN Girls' Flourishing Initiative

Creating pathways through education, STEM, digital inclusion, leadership and wellbeing that enable girls to realise their full potential.

c. The WRN Women, Enterprise and Inclusive Prosperity Initiative

Advancing research on entrepreneurship, financial inclusion, decent work and inclusive economic development.

d. The WRN Flourishing Communities Initiative

Strengthening leadership, governance, migration policy, community resilience and social justice.

e. The WRN Climate Futures and Environmental Justice Initiative

Supporting research on climate resilience, sustainability, environmental justice and equitable transitions.

f. The WRN Future Knowledge Initiative

Reimagining research systems, artificial intelligence, digital transformation, research leadership and knowledge creation.

Each initiative provides a long-term platform capable of attracting multiple grants, partnerships and interdisciplinary collaborations.

5. Research Programmes

Each Global Initiative contains several Research Programmes. Programmes focus on major thematic priorities that require sustained investigation over many years.

For example:

Girls' Flourishing Initiative

- STEM Futures Programme
- Digital Inclusion Programme

- Girls' Leadership Programme
- Future Skills Programme
- Educational Wellbeing Programme

Research Programmes provide continuity across multiple projects and funding cycles.

6. Research Projects

Projects represent the operational level of WRN's work. Projects generate evidence, develop innovations and test new ideas.

Examples include:

- Girls' STEM Disengagement in Nigeria
- Women Entrepreneurs and Artificial Intelligence
- Climate Resilience and Women's Livelihoods
- Digital Health Equity
- Migration and Human Flourishing

Individual projects are designed to contribute simultaneously to programme objectives, initiative goals and WRN's overarching philosophy.

7. Knowledge Translation

Knowledge only creates value when it becomes accessible and useful. Every WRN project therefore includes deliberate strategies for translating evidence into action.

Knowledge translation includes:

- journal articles;
- books;
- policy briefs;
- toolkits;
- practitioner guidance;
- educational resources;
- media engagement;
- conferences;
- training;
- digital platforms.

Translation is not an end stage. It is integrated throughout the research process.

8. Societal Impact

The final purpose of the WRN Institutional Architecture is societal transformation. Success is measured by improvements in:

- health;
- wellbeing;
- educational opportunity;
- leadership;
- entrepreneurship;
- institutional capacity;
- environmental sustainability;
- policy effectiveness;
- community resilience.

Collectively these outcomes contribute to the ultimate objective:

Human Flourishing.

9.3 Alignment Across the Institution

One of the defining characteristics of WRN is institutional coherence:

- Every layer strengthens every other layer.
- Research Philosophy informs the Research System.
- The Research System guides the Research Pillars.
- The Research Pillars organise the Global Initiatives.
- Global Initiatives coordinate Research Programmes.
- Research Programmes deliver Research Projects.
- Research Projects generate knowledge.
- Knowledge informs policy and practice.
- Policy and practice contribute to human flourishing.

This alignment ensures that individual activities contribute to a shared institutional purpose rather than existing as isolated initiatives.

9.4 Building for the Future

The WRN Institutional Architecture has been intentionally designed for long-term growth.

As the organisation expands:

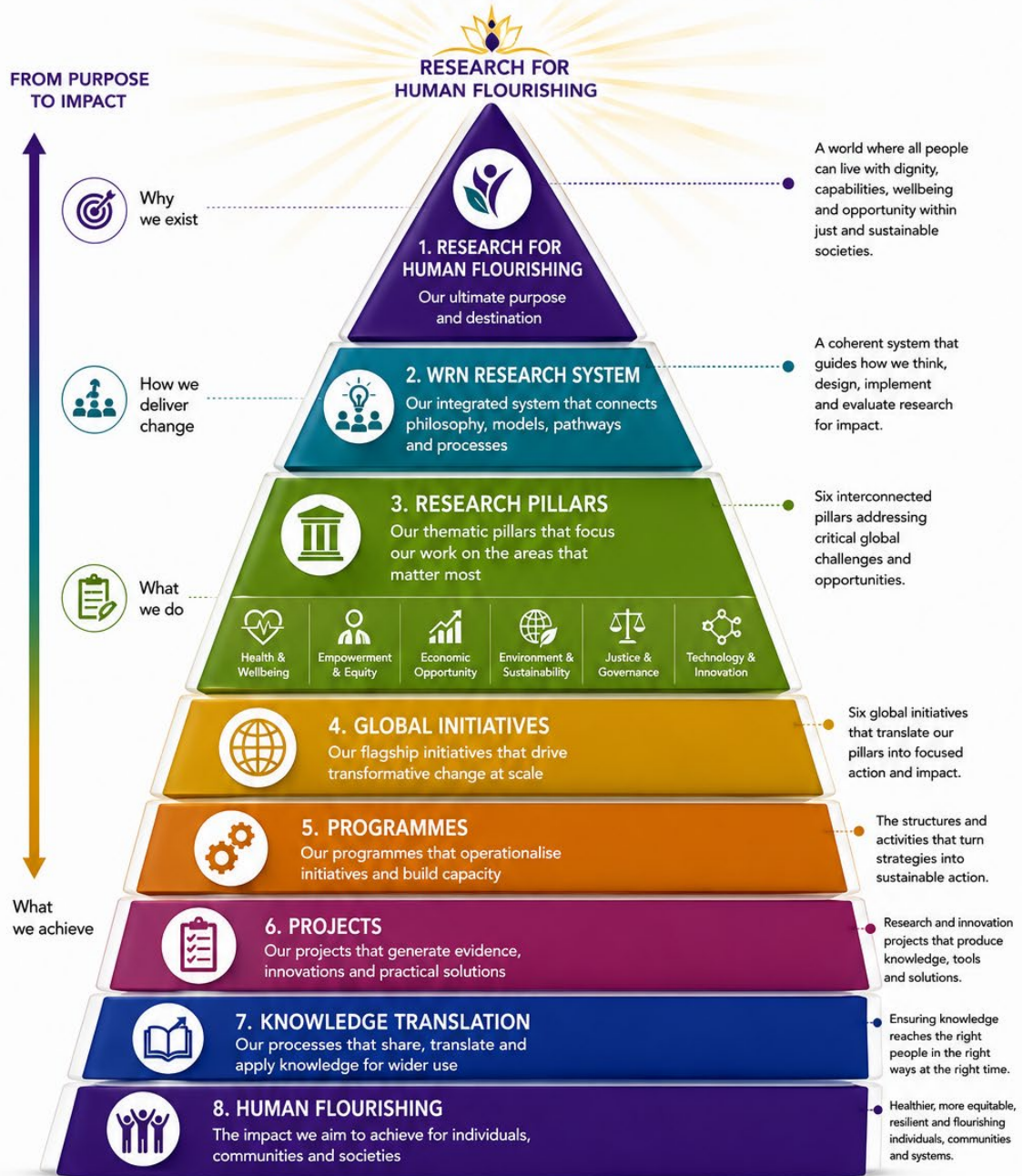
- Research Programmes may become Centres of Excellence.
- Global Initiatives may develop into internationally recognised Institutes.
- New partnerships may establish regional hubs across Africa, Asia, Latin America and beyond.

- The architecture therefore provides both stability and flexibility.
- Its philosophy remains constant.
- Its institutional expression continues to evolve.

FIGURE 9.1

THE WRN INSTITUTIONAL ARCHITECTURE

A Multi-Level System for Research for Human Flourishing



Women Research Network

Research for Human Flourishing

TYPE: INSTITUTIONAL FRAMEWORK

Chapter Summary

The WRN Institutional Architecture translates philosophy into organisational design.

It ensures that every project, programme, initiative and partnership contributes to a coherent institutional vision centred on Research for Human Flourishing.

Rather than organising research around disciplines alone, WRN organises its work around the conditions required for healthier lives, stronger communities, more equitable societies and sustainable futures.

The following chapter introduces the six WRN Global Initiatives in greater detail, outlining their strategic priorities, flagship programmes, international partnerships and long-term ambitions.

CHAPTER 10

The WRN Global Initiatives

Driving Long-term Research for Human Flourishing

"Projects answer questions. Initiatives change systems."

Opening Reflection

Lasting societal transformation rarely occurs through isolated research projects.

While individual studies contribute important evidence, the most significant advances in health, education, sustainability and social development emerge through sustained programmes of inquiry that bring together researchers, policymakers, practitioners, communities and funders around shared long-term goals.

WRN therefore organises its work through a portfolio of Global Initiatives. Each initiative represents a long-term institutional commitment to addressing one of the defining challenges affecting the flourishing of women and girls.

Rather than being limited by individual grants or funding cycles, the initiatives provide enduring platforms for collaboration, innovation and societal impact.

They ensure that every project contributes to a larger vision.

10.1 Why Global Initiatives?

Research funding is often short-term. Societal challenges are not. For instance, Girls' participation in STEM cannot be transformed within a two-year project. Climate resilience requires sustained collaboration over decades. Improving women's health demands continuous learning, policy engagement and institutional strengthening.

Thus, Global Initiatives provide continuity. They allow WRN to build expertise, develop partnerships and accumulate evidence over time while responding flexibly to emerging opportunities.

Every initiative therefore becomes a long-term investment in societal transformation.

Initiative One: The WRN Women's Health and Wellbeing Initiative

Vision

A world in which every woman has the opportunity to achieve the highest attainable standard of physical, mental and social wellbeing throughout her life.

Grand Challenge

How can research transform health systems, policies and communities to improve women's health and wellbeing across diverse social, cultural and economic contexts?

Strategic Priorities

- Maternal and reproductive health
- Mental health and psychosocial wellbeing
- Digital health and health innovation
- Healthy ageing
- Nutrition and preventive health
- Community health systems
- Health equity

Illustrative Research Programmes

- Maternal Health Futures
- Women's Mental Wellbeing
- Digital Health Equity
- Healthy Communities Programme

Expected Impact

- Improved health outcomes
- Stronger health systems
- Evidence-informed policy
- Health equity
- Community resilience

Initiative Two: The WRN Girls' Flourishing Initiative

Vision

Every girl flourishes through equitable access to education, opportunity, leadership and wellbeing.

Grand Challenge

How can research create educational systems and social environments in which girls develop the confidence, knowledge and opportunities required to thrive?

Strategic Priorities

- STEM participation
- Educational equity
- Digital inclusion
- AI and learning
- Leadership development
- Career pathways

- Mental wellbeing

Existing WRN Projects

- ✓ Girls' STEM Disengagement in Nigeria
- ✓ British Academy Project
- ✓ STEG Project

These projects become the foundation of a much larger international initiative.

Expected Impact

- Increased STEM participation
- Educational attainment
- Leadership confidence
- Future employability
- Wellbeing

Initiative Three: The WRN Women, Enterprise and Inclusive Prosperity Initiative

Vision

Inclusive economies where women have equitable opportunities to innovate, lead enterprises and build sustainable livelihoods.

Grand Challenge

How can entrepreneurship, innovation and inclusive economic systems contribute to human flourishing?

Strategic Priorities

- Women's entrepreneurship
- Financial inclusion
- Informal economies
- Digital entrepreneurship
- Future of work
- Social enterprise
- Entrepreneurial ecosystems

This initiative becomes WRN's internationally recognised centre of excellence in women's entrepreneurship.

Initiative Four: The WRN Flourishing Communities Initiative

Vision

Communities where women participate fully in leadership, governance and social transformation.

Strategic Priorities

- Leadership
- Governance
- Migration
- Social justice
- Community resilience
- Youth leadership
- Peacebuilding

Initiative Five: The WRN Climate Futures and Environmental Justice Initiative

Vision

Environmentally sustainable futures where women and communities thrive within resilient ecosystems.

Strategic Priorities

- Climate resilience
- Energy transition
- Environmental justice
- Sustainable livelihoods
- Water security
- Biodiversity
- Circular economy

This initiative naturally incorporates your work on:

- Green capitalism
- Transition extractivism
- Hydrogen
- Renewable energy
- Climate governance

Initiative Six: The WRN Future Knowledge Initiative

Vision

A future in which research systems themselves enable innovation, inclusion and societal transformation.

Strategic Priorities

- AI

- Digital transformation
- Research leadership
- Research integrity
- Open science
- Knowledge co-creation
- Research culture
- Research evaluation

This initiative makes WRN unusual. It studies not only society, but the future of research itself.

10.2 Every Initiative Has the Same Architecture

To ensure institutional coherence, every WRN Global Initiative follows the same design.

Each initiative contains:

Vision

Why it exists.

Grand Challenge

The defining question.

Research Programmes

Long-term areas of inquiry.

Research Projects

Individual funded studies.

Knowledge Translation

Publications, policy briefs, toolkits, digital learning, media engagement.

Capacity Development

Researcher training, fellowships, doctoral networks, mentoring and leadership.

Partnerships

Universities, governments, communities, industry and philanthropy.

Impact Framework

How societal change is measured.

This common architecture enables flexibility while preserving a shared institutional identity.

10.3 Building a Global Portfolio

The WRN Global Initiatives are not independent entities.

They form an integrated portfolio.

Each initiative contributes specialist expertise.

Together they address the interconnected conditions required for human flourishing.

For example:

A project on girls' STEM participation may involve:

- Girls' Flourishing Initiative
- Future Knowledge Initiative
- Women, Enterprise and Inclusive Prosperity Initiative
- Flourishing Communities Initiative

This encourages interdisciplinary collaboration while avoiding organisational silos.

Chapter Summary

The WRN Global Initiatives provide the institutional engine through which the organisation delivers long-term societal impact.

By combining sustained research, partnership, leadership development and knowledge translation, each initiative creates a platform capable of attracting international collaboration while contributing to the shared purpose of Research for Human Flourishing.

FIGURE 10.1

WHAT WRN DELIVERS GLOBALLY

Six Flagship Initiatives Driving Research for Human Flourishing Worldwide



ONE VISION. SIX INITIATIVES. ENDLESS POSSIBILITIES.
Working together across borders, disciplines and communities to create a world where all can flourish.



Women Research Network

Research for Human Flourishing

TYPE: GLOBAL PORTFOLIO

CHAPTER 11

The WRN Institutional Platforms

Building Capacity for Research for Human Flourishing

"Great institutions are defined not only by the research they produce, but by the people, partnerships and systems they develop."

Opening Reflection

Research alone cannot transform society. Evidence requires people who can generate it, leaders who can champion it, institutions that can sustain it, and partnerships that can translate it into action.

For this reason, WRN understands institutional capacity as a form of impact. Developing researchers, strengthening organisations, supporting communities and influencing systems are not activities that occur alongside research.

They are integral to research itself. The WRN Institutional Platforms provide the organisational infrastructure through which people, partnerships and institutions grow together.

Why Institutional Platforms?

Research projects finish.

People continue.

Funding cycles end.

Institutions remain.

If WRN is to contribute to human flourishing over generations, it must invest not only in producing knowledge but also in building the capability required to sustain knowledge creation.

The Institutional Platforms therefore operate across every Global Initiative.

They are not attached to one research area. They strengthen the entire organisation.

Platform One: Research Leadership Platform

Developing the Next Generation of Global Research Leaders

Purpose

To develop ethical, collaborative and globally connected research leaders capable of addressing complex societal challenges.

Activities

- Leadership programmes
- Mentoring
- Fellowships
- Visiting scholars
- Leadership retreats
- Women research leaders network
- Emerging leaders programme

Long-term Vision

By 2035, WRN becomes recognised internationally as one of the leading organisations developing women research leaders from the Global South.

Platform Two: Research Excellence Platform

Strengthening Research Quality

This platform supports excellence across every WRN initiative.

Activities include:

- Grant development
- Research design
- Methods support
- Statistics
- Mixed methods
- Ethics
- Research integrity
- Open science
- Peer review

Platform Three: Knowledge Translation Platform

From Evidence to Action

Research should influence society.

Activities include:

- Policy briefs
- Government engagement
- Practitioner toolkits
- Digital learning
- Podcasts
- Media engagement
- Public lectures
- Community reports

Platform Four: Researcher Development Platform

This platform supports researchers throughout their careers.

Activities include:

- Doctoral Academy
- Early Career Researchers
- Mid-career development
- Visiting Fellowships
- Writing Retreats
- Publication mentoring
- Career coaching

Platform Five: Global Partnerships Platform

Purpose

To build enduring partnerships across

- universities
- governments
- NGOs
- industry
- philanthropy
- communities
- international organisations

Instead of seeing partnerships as individual relationships, WRN treats them as strategic institutional assets.

Platform Six: Innovation and Impact Platform

Purpose

To ensure research creates measurable change.

Activities include:

- Impact evaluation
- Monitoring
- Innovation labs
- Pilot projects
- Scale-up
- Social innovation
- Enterprise support

FIGURE 11.1

THE WRN INSTITUTIONAL PLATFORMS

Our Platforms for Collaboration, Influence and Impact



OUR PURPOSE

To advance Research for Human Flourishing through interconnected institutional platforms that mobilise knowledge, people, partnerships and resources for global impact.



1. WRN RESEARCH LAB

Drives interdisciplinary, participatory and impact-focused research programmes and projects.

Focus: Evidence generation, innovation, and real-world solutions.



2. WRN ACADEMY

Builds research capacity, leadership and skills through training, mentoring and knowledge exchange.

Focus: Learning, development and empowerment.



3. WRN NETWORK & COMMUNITY

A global network of scholars, practitioners, partners and communities working together for change.

Focus: Connection, collaboration and collective action.



4. WRN POLICY & INFLUENCE HUB

Translates research into policy insights and advocates for equity, inclusion and justice.

Focus: Influence, advocacy and systemic change.



8. WRN SUSTAINABILITY & OPERATIONS UNIT

Ensures effective governance, sustainability, resource management and operational excellence.

Focus: Sustainability, accountability and long-term impact.



5. WRN PARTNERSHIPS PLATFORM

Builds strategic partnerships with institutions, funders, governments, business and civil society.

Focus: Co-creation, resource mobilisation and shared impact.



6. WRN GLOBAL INITIATIVES

Leads six flagship initiatives addressing critical global challenges and advancing human flourishing.

Focus: Thematic leadership for global transformation.



7. WRN COMMUNICATIONS & ENGAGEMENT HUB

Shares knowledge, stories and evidence through diverse channels to inspire and engage.

Focus: Visibility, storytelling and public engagement.



OUR ENABLERS



Inclusive Participation



Ethics & Integrity



Innovation & Creativity



Global Solidarity



ONE PURPOSE. MANY PLATFORMS. GLOBAL IMPACT.

Working across platforms to generate knowledge, build capacity, influence systems and create a world where all people can flourish.



Knowledge that matters



Capacity that empowers



Partnerships that transform



Impact that lasts



Women Research Network

Research for Human Flourishing

TYPE: INSTITUTIONAL FRAMEWORK

CHAPTER 12

The WRN Global Communities

Building a Global Community for Research for Human Flourishing

"Research transforms society when it becomes a shared endeavour rather than an individual pursuit."

Opening Reflection

Knowledge does not flourish in isolation.

The most influential research movements throughout history have been sustained by communities of scholars, practitioners, policymakers, innovators and citizens united by shared questions rather than shared institutions.

Universities produce graduates. Communities produce movements.

The Women Research Network was founded on this principle.

Before it became an organisation, it was a community. Before it became a strategy, it was a conversation.

Before it became an institution, it was a network of researchers committed to supporting one another and improving lives through research.

The future of WRN therefore depends not only upon projects or funding but upon nurturing communities capable of learning, collaborating and leading together.

Why Communities?

Projects finish.

Communities remain.

Funding ends.

Relationships continue.

Communities create:

- trust;
- knowledge exchange;
- collaboration;
- leadership;
- resilience;
- innovation.

Communities therefore become one of WRN's most important forms of institutional capital.

The WRN Communities

Rather than having members, WRN cultivates six interconnected communities.

Community One: Researchers

The heart of WRN.

- Academics.
- Scientists.
- Practitioners.
- Interdisciplinary scholars.

Community Two: Future Researchers

- Doctoral students.
- Masters students.
- Early Career Researchers.
- Young scholars.

This becomes your talent pipeline.

Community Three: Women Leaders

- Entrepreneurs.
- Community leaders.
- Professionals.
- Executives.
- NGO leaders.
- Government leaders.

Because leadership is also knowledge.

Community Four: Institutions

- Universities.
- Research centres.
- Hospitals.
- Schools.
- Government.
- Industry.
- NGOs.
- International organisations.
- WRN partners with institutions,

not just individuals.

Community Five: Communities of Practice

- Teachers.
- Health workers.
- Policy makers.
- Development practitioners.
- Innovation hubs.
- Business networks.

These people translate research.

Community Six: Global Partners

- Wellcome.
- UN Women.
- WHO.
- African Union.
- OECD.
- Universities.
- Foundations.
- Industry.

These become strategic communities rather than simply funders.

FIGURE 12.1

THE COMMUNITIES THAT MAKE IT POSSIBLE

A Global Circle of Collaboration, Knowledge and Impact for Human Flourishing



Women Research Network

Research for Human Flourishing

TYPE: INSTITUTIONAL FRAMEWORK

The WRN Research for Human Flourishing System

Integrating Philosophy, Research and Global Impact

Bringing the Whole System Together

The Women Research Network (WRN) is more than a research network. It is an integrated institutional ecosystem designed to advance Research for Human Flourishing through collaborative, ethical and impact-driven scholarship. Every component of the WRN system is intentionally connected, creating a coherent pathway from ideas to action and from knowledge to societal transformation.

The WRN Research Cycle presented in Figure F1 illustrates how our institutional philosophy is translated into practice. Beginning with a supportive institutional ecosystem and a shared research philosophy, the system establishes the intellectual foundations that guide our research models, methodological approaches and thematic priorities. These foundations shape the initiatives, institutional platforms, communities and collaborative projects that generate new knowledge and practical solutions.

Knowledge does not remain within academia. Through knowledge translation, research is transformed into policy, practice, innovation, capacity building and community action. This continuous process ultimately contributes to human flourishing by strengthening dignity, wellbeing, equity, sustainability and resilience across diverse societies.

Unlike traditional linear models of research, the WRN system is adaptive and iterative. Learning generated through projects, partnerships and communities continually informs future research questions, institutional development and strategic priorities. The system therefore functions as a living ecosystem in which every component strengthens the others.

Throughout this journey, WRN is guided by enduring values including human dignity, equity and justice, integrity, collaboration, inclusion, sustainability and continuous learning. These principles ensure that excellence in research is always accompanied by ethical responsibility and meaningful societal impact.

Research for Human Flourishing is therefore not a single framework or methodology. It is an institutional philosophy that shapes how knowledge is created, shared and applied to address complex global challenges while expanding opportunities for individuals, communities and future generations to flourish.

Research changes societies when it is guided by purpose.

Purpose creates institutions.

Institutions create communities.

Communities generate knowledge.

Knowledge transforms lives.

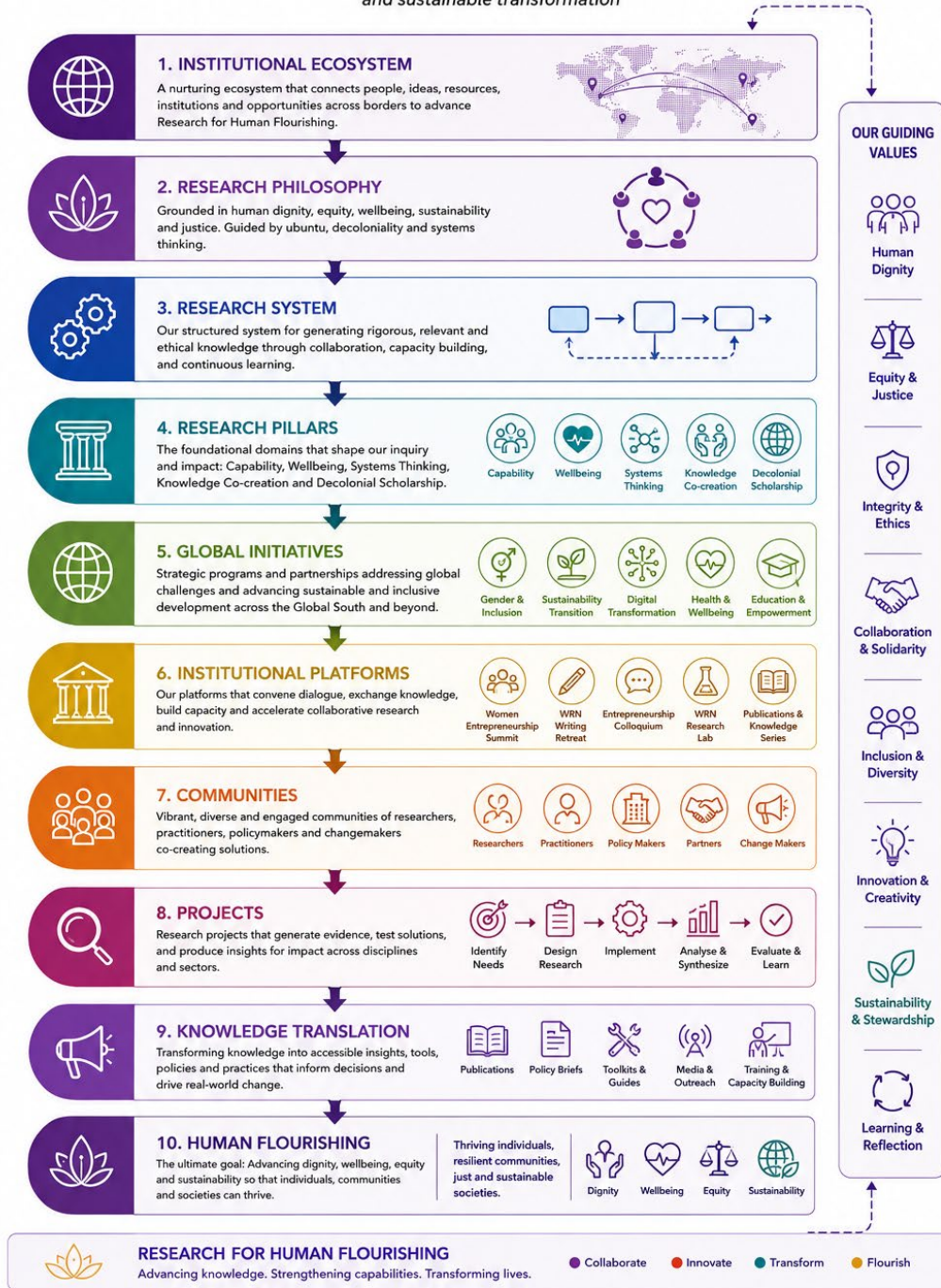
Human flourishing is therefore not simply the outcome of research; it is the reason we undertake research.



WRN RESEARCH CYCLE

FROM KNOWLEDGE TO HUMAN FLOURISHING

A holistic ecosystem for impact-driven research and sustainable transformation



THE WRN COMMITMENT

A Founding Statement

We believe that research should do more than generate knowledge.

It should expand human capabilities.

It should strengthen communities.

It should inform policy.

It should inspire innovation.

It should challenge injustice.

It should protect our planet.

Above all, it should enable every person to flourish.

Our Commitment

The Women Research Network exists to advance rigorous, collaborative and ethical research that contributes to a more just, inclusive and sustainable world.

We are committed to building knowledge that crosses disciplinary boundaries, connects global and local perspectives, values diverse ways of knowing, and creates meaningful change for individuals, communities and societies.

Our work is guided by a simple but profound belief:

Research has its greatest value when it improves the human condition.

Our Invitation

Whether you are

- a researcher,
- a student,
- a policymaker,
- a practitioner,
- an entrepreneur,
- a community leader,
- or a global partner,

there is a place for you within the WRN community.

Together we can create knowledge that not only explains the world, but helps transform it.

Our Vision for 2035

By 2035, we aspire to be recognised globally as the leading collaborative research ecosystem advancing **Research for Human Flourishing**.

We envision a future where:

- research is more inclusive than exclusive;
- collaboration replaces competition;
- knowledge is translated into meaningful action;
- institutions become catalysts for societal transformation; and
- human flourishing becomes the defining measure of research excellence.

Closing Reflection

WRN is about:

- ✓ **Knowledge that listens.**
- ✓ **Research that transforms.**
- ✓ **Partnerships that empower.**
- ✓ **Communities that flourish.**

WRN

Women Research Network

Research for Human Flourishing

Collaborative. Inclusive. Transformative. Global.

"Advancing knowledge. Strengthening capabilities. Transforming lives."

"The future will not be shaped by knowledge alone. It will be shaped by what we choose to do with that knowledge.

At WRN, we choose human flourishing."



WRN



Women Research Network

Research for Human Flourishing